



a Scott Fetzer company

Carefree of Colorado a Scott Fetzer Co.
2145 W. 6th Avenue/Broomfield, CO 80020
(303) 469-3324

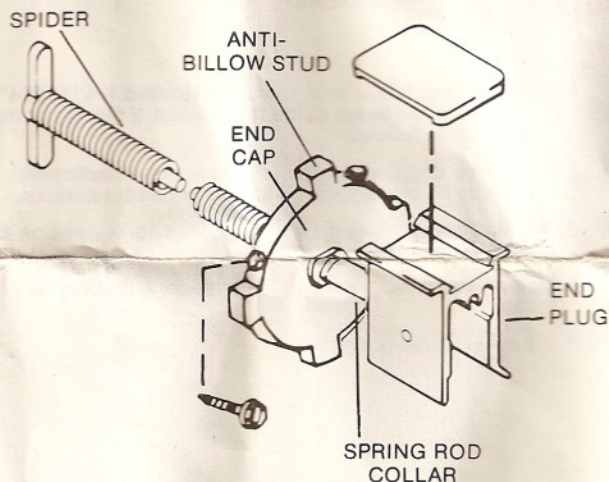
CAREFREE AWNING & PARK MODEL AWNING SPRING REPLACEMENT INSTRUCTIONS

The following instructions are for Carefree Awnings produced prior to 1984. Deluxe Carefree Awnings use a different spring assembly and require different procedures for replacement.

TOOLS REQUIRED: Vise Grips
Bladed Screw Driver
5/16" Socket or Nut Driver
3/32" & 5/32" Drill Bits

1. Attach vise grips to spring rod collar between end cap and end plug.
2. Remove end plug screw from side of arm channel.
3. Using vise grips, pull end plug from arm channel. Carefully allow spring to unwind.

WARNING: Springs are under tension and will unwind quickly. Keep hands and clothing clear of end plug, as personal injury may result.



4-1. 1975 and older 3 slotted roller tube

- A. Drill out the three rivets holding metal end cap to roller tube, using a 5/32" bit. Remove spring assembly from roller tube.
- B. Pre-drill the plastic end cap of the replacement spring assembly, using 3/32" bit. Drill three holes in the side of the end cap, one between each anti-billow stud. Use the depressions on the side of the end cap as guides. If the spider on the replacement spring is too long to fit in roller tube, 3/8" will have to be cut from one leg of spider.
- C. Grease replacement spring thoroughly using Union 76 Hi Temp Grease-2. (There is usually enough excess grease on the original spring.)
- D. Using holes in end cap as guides, drill three 3/32" holes in roller tube.
- E. Place one of the 3/16" aluminum spacers between end cap and roller tube in line with each pre-drilled hole in roller tube and end cap. Secure end cap to roller tube with #12 x 3/4" Slotted Hex Washer Head Sheet Metal Screws.
- F. Grasp spring rod collar with vise grips and wind the spring away from vehicle the required number of turns:

CAREFREE AWNING

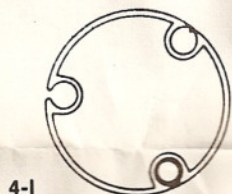
Length	Number of Turns
6'-10'	3
11'-13'	4
14'-16'	5
17'-19'	6
20'-21'	7

PARK MODEL AWNING

Length	Rear Spring Turns	Front Spring Turns
18'-19'	6	2
20'-21'	7	2
22'-25'	8	2

The Universal Spring will fit any of the four (4) existing Carefree roller tubes. Identify roller type from the figures below and proceed to the instructions referenced by that figure:

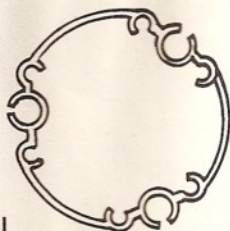
- 4-I. '75 and older 3 slotted roller tube
- 4-II. '76-'79 3 inch/3 slotted roller tube
- 4-III. '76-'79 3.5 inch/3 slotted roller tube
- 4-IV. '80 and newer 2 slotted roller tube



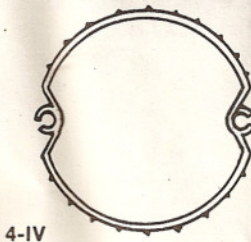
4-I



4-II



4-III



4-IV

NOTE: If awning is extended, spring turns should be increased by 8 turns, except front Park Model spring which should be increased by 1 turn.

WARNING: Springs are under tension and will unwind quickly. Keep hands and clothing clear of end plug, as personal injury may result.

- G. Insert end plug into top of arm channel and secure with end plug screw.
- H. Proceed to Section 5 to check end cap timing.

4-II. 1976 - 1979 3 inch/3 slotted roller tube

- A. Remove three (3) end cap screws from the face of the plastic end cap and remove spring assembly.
- B. Proceed with installation as outlined in Steps 4-I, B-H.

4-III. 1976-1979 3.5 inch/3 slotted roller tube

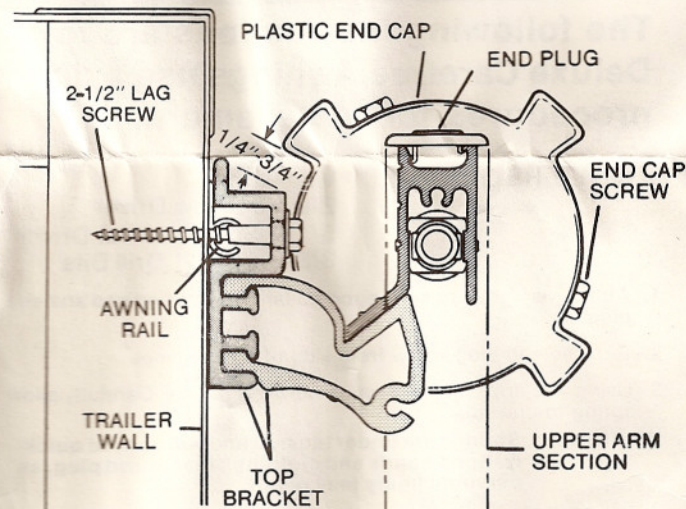
- A. Remove three (3) end cap screws from the face of the plastic end cap and remove spring assembly.
- B. Pre-drill the plastic end cap of the replacement spring assembly using 3/32" bit. Drill two holes 180° apart on the side of the end cap, using depression as guides.
- C. Grease replacement spring thoroughly using Union 76 Hi Temp Grease-2. (There is usually enough excess grease on the original spring.) Remove spider extender from defective spring and replace on Universal spring assembly.
- D. Using holes in end cap as guides, drill two 3/32" holes in roller tube 180° apart.
- E. Secure end cap to roller tube with #12 x 3/4" Slotted Hex Washer Head Sheet Metal Screw. Repeat on other side of end cap.
- F. For steps F-H., reference 4-I, F - G.

4-IV. 1980 and newer 2 slotted roller tube

- A. Remove two end cap screws from side of plastic end cap and remove spring assembly.
- B. For Steps B-F, reference 4-III, B-F.

5. TIMING OF PLASTIC END CAP

Each plastic end cap contains four (4) anti-billow studs. The anti-billow studs, when acting against the ledge of the top bracket (or "h" lock on curved arms) prevent the roller tube from turning in the wind and canopy from billowing. For this reason, it is very important the awning is "timed" (anti-billow studs in proper position) correctly.



- A. One (1) anti-billow stud should be located 1/4" to 3/4" above the anti-billow ledge of the top bracket. If this is not the case, proceed as follows:
- B. Remove end cap screws (and spacers if applicable). Rotate end cap so one anti-billow stud is in correct position.
- C. Using holes in end cap as guides, drill two (or three if applicable) 3/32" holes in roller tube.
- D. Replace end cap screws (and spacers, if applicable) in end cap.
- E. Recheck stud position.

CAREFREE AWNINGS

a Scott Fetzer company

Carefree of Colorado a Scott Fetzer Co.
2145 W. 6th Avenue/Broomfield, CO 80020
(303) 469-3324