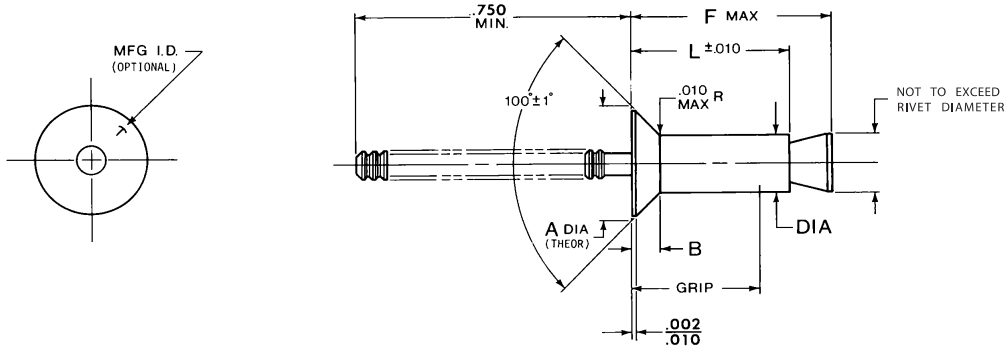


Genuine Aircraft Hardware Co.

Nut-Plate Rivets

MS20426 (Style) 100° Flush Head, CCR264SS & CS



DIA DASH NO.	DIA MIN./MAX.	A (MAX)	B (REF)
-3	.092/.097	.183	.036
-4	.123/.128	.229	.042

All fasteners should be specified and used in accordance with manufacturer's recommendations, using the grip range and hole size information provided in the catalog.

PART NUMBER	MATERIAL j		FINISH k	
	SLEEVE	STEM	SLEEVE	STEM
CCR 264SS (MS20605S)	C-1018 STEEL per ASTM A-510	CARBON STEEL per ASTM A-510	CADMIUM PLATE per QQ-P-416 TYPE II, Class 2	RUST PREVENTATIVE COATING
CCR 264CS (MS20605N)	A-286 per AMS 5731	305 CRES per ASTM A-493	SOLID FILM LUBE per MIL-L-46010	PASSIVATE per QQ-P-35

NOMINAL RIVET DIAMETER	HOLE SIZE & DRILL	GRIP RANGE	L -.010	F MAX	COUNTERSUNK HEAD RIVET		INST. WT. # / M
					STEEL	CRES	
3/32" (-3)	.097 .101 (#40)	.046-.062	.130	.218	CCR264SS-3-01	CCR264CS-3-01	.15
		.063-.125	.193	.281	CCR264SS-3-02	CCR264CS-3-02	.22
		.126-.187	.255	.343	CCR264SS-3-03	CCR264CS-3-03	.29
		.188-.250	.318	.405	CCR264SS-3-04	CCR264CS-3-04	.36
		.251-.312	.380	.468	CCR264SS-3-05	CCR264CS-3-05	.43
		.313-.375	.443	.530	CCR264SS-3-06	CCR264CS-3-06	.50
		.376-.437	.505	.592	CCR264SS-3-07	CCR264CS-3-07	.57
		.438-.500	.568	.655	CCR264SS-3-08	CCR264CS-3-08	.64
		.501-.562	.630	.718	CCR264SS-3-09	CCR264CS-3-09	.71
		.563-.625	.695	.780	CCR264SS-3-10	CCR264CS-3-10	.78
		.626-.687	.755	.843	CCR264SS-3-11	CCR264CS-3-11	.85
		.688-.750	.818	.905	CCR264SS-3-12	CCR264CS-3-12	.92

NOMINAL RIVET DIAMETER	HOLE SIZE & DRILL	GRIP RANGE	L -.010	F MAX	COUNTERSUNK HEAD RIVET		INST. WT. # / M
					STEEL	CRES	
1/8" (-4)	.129 .132 (#30)	.046-.062	.160	.256	CCR264SS-4-01	CCR264CS-4-01	.51
		.063-.125	.222	.318	CCR264SS-4-02	CCR264CS-4-02	.62
		.126-.187	.285	.381	CCR264SS-4-03	CCR264CS-4-03	.73
		.188-.250	.347	.443	CCR264SS-4-04	CCR264CS-4-04	.84
		.251-.312	.410	.506	CCR264SS-4-05	CCR264CS-4-05	.95
		.313-.375	.472	.568	CCR264SS-4-06	CCR264CS-4-06	1.05
		.376-.437	.534	.630	CCR264SS-4-07	CCR264CS-4-07	1.16
		.438-.500	.597	.711	CCR264SS-4-08	CCR264CS-4-08	1.27
		.501-.562	.660	.774	CCR264SS-4-09	CCR264CS-4-09	1.38
		.563-.625	.722	.836	CCR264SS-4-10	CCR264CS-4-10	1.49
		.626-.687	.785	.899	CCR264SS-4-11	CCR264CS-4-11	1.60
		.688-.750	.847	.961	CCR264SS-4-12	CCR264CS-4-12	1.71

Grips in shaded areas are available on special order only.

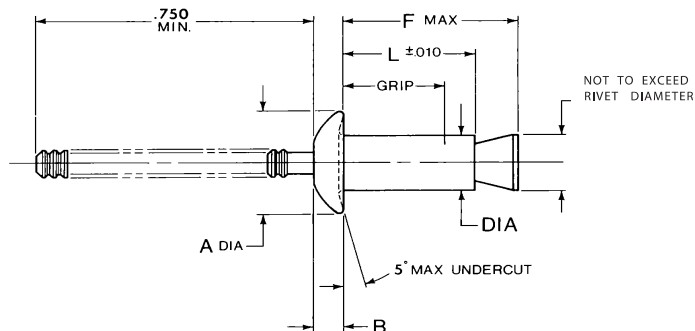
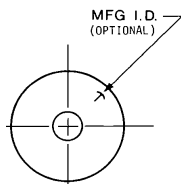
j Material designation refers to chemical composition only.

k See Technical Data Section for Special Finish Codes.

Genuine Aircraft Hardware Co.

Nut-Plate Rivets

MS20470 (Style) Universal Head CCR274SS & CS



DIA DASH NO.	DIA MIN./MAX.	A MIN./MAX.	B MIN./MAX.
-3	.092/.097	.178/.196	.040/.050
-4	.123/.128	.238/.262	.054/.064

All fasteners should be specified and used in accordance with manufacturers recommendations, using the grip range and hole size information provided in the catalog.

PART NUMBER	MATERIAL j		MATERIAL k	
	SLEEVE	STEM	SLEEVE	STEM
CCR274SS	C-1018 STEEL per ASTM A-510	CARBON STEEL per ASTM A-510	CADMIUM PLATE per QQ-P-416 TYPE II, Class 2	RUST PREVENTATIVE COATING
CCR274CS (MS20604R)	A-286 per AMS 5731	305 CRES per ASTM A-493	SOLID FILM LUBE per MIL-L-46010	PASSIVATE per QQ-P-35

NOMINAL RIVET DIAMETER	HOLE SIZE & DRILL	GRIP RANGE	L -.010	F MAX	UNIVERSAL HEAD RIVET		INST. WT. #/M
					STEEL	CRES	
3/32" (-3)	.097 (#40)	.046-.062	.130	.218	CCR274SS-3-01	CCR274CS-3-01	.22
		.063-.125	.193	.281	CCR274SS-3-02	CCR274CS-3-02	.29
		.126-.187	.255	.343	CCR274SS-3-03	CCR274CS-3-03	.36
		.188-.250	.318	.405	CCR274SS-3-04	CCR274CS-3-04	.43
		.251-.312	.380	.468	CCR274SS-3-05	CCR274CS-3-05	.50
		.313-.375	.443	.530	CCR274SS-3-06	CCR274CS-3-06	.57
		.376-.437	.505	.592	CCR274SS-3-07	CCR274CS-3-07	.64
		.438-.500	.568	.655	CCR274SS-3-08	CCR274CS-3-08	.71
		.501-.562	.630	.718	CCR274SS-3-09	CCR274CS-3-09	.78
		.563-.625	.695	.780	CCR274SS-3-10,	CCR274CS-3-10	.85
		.626-.687	.755	.843	CCR274SS-3-11	CCR274CS-3-11	.92
		.688-.750	.818	.905	CCR274SS-3-12	CCR274CS-3-12	.99

NOMINAL RIVET DIAMETER	HOLE SIZE & DRILL	GRIP RANGE	L -.010	F MAX	UNIVERSAL HEAD RIVET		INST. WT. #/M
					STEEL	CRES	
1/8" (-4)	.129 (#30)	.046-.062	.160	.256	CCR274SS-4-01	CCR274CS-4-01	.86
		.063-.125	.222	.318	CCR274SS-4-02	CCR274CS-4-02	.97
		.126-.187	.285	.381	CCR274SS-4-03	CCR274CS-4-03	1.08
		.188-.250	.347	.443	CCR274SS-4-04	CCR274CS-4-04	1.19
		.251-.312	.410	.506	CCR274SS-4-05	CCR274CS-4-05	1.30
		.313-.375	.472	.568	CCR274SS-4-06	CCR274CS-4-06	1.41
		.376-.437	.534	.630	CCR274SS-4-07	CCR274CS-4-07	1.52
		.438-.500	.597	.711	CCR274SS-4-08	CCR274CS-4-08	1.63
		.501-.562	.660	.774	CCR274SS-4-09	CCR274CS-4-09	1.74
		.563-.625	.722	.836	CCR274SS-4-10	CCR274CS-4-10	1.85
		.626-.687	.785	.899	CCR274SS-4-11	CCR274CS-4-11	1.96
		.688-.750	.847	.961	CCR274SS-4-12	CCR274CS-4-12	2.07

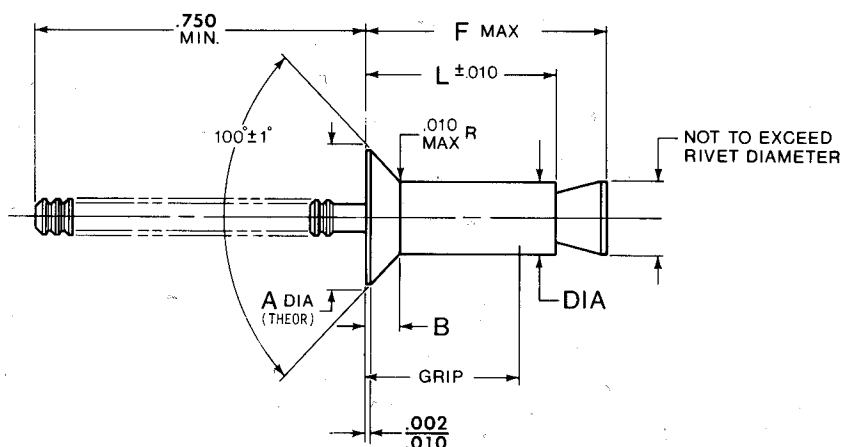
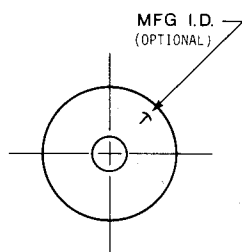
Grips in shaded areas are available on special order only.

j Material designation refers to chemical composition only.

k See Technical Data Section for Special Finish Codes.

NUT-PLATE RIVETS

NAS1097 100° FLUSH HEAD / CCR244SS & CS



DIA DASH NO.	DIA MIN / MAX	A (MAX)	B (REF)
-3	.092 / .097	.148	.021
-4	.123 / .128	.196	.028

All fasteners should be specified and used in accordance with manufacturer's recommendations, using the grip range and hole size information provided in the catalog.

PART NUMBER	MATERIAL ①		FINISH ②	
	SLEEVE	STEM	SLEEVE	STEM
CCR244SS	C-1018 STEEL per ASTM A-545	STEEL	CADMIUM PLATE per QQ-P-416 TYPE II, Class 2	RUST PREVENTATIVE COATING
CCR244CS	A-286 per AMS 5731	305 CRES per ASTM A-493	SOLID FILM LUBE per MIL-L-46010	PASSIVATE per QQ-P-35

NOMINAL RIVET DIAMETER	HOLE SIZE & DRILL	GRIP RANGE	L ±.010	F MAX	COUNTERSUNK HEAD RIVET		INST. WT. #/M
					STEEL	CRES	
3/32" (-3)	.097 (#40)	.046-.062	.130	.250	CCR244SS-3-01	CCR244CS-3-01	.13
		.063-.125	.193	.313	CCR244SS-3-02	CCR244CS-3-02	.20
		.126-.187	.255	.375	CCR244SS-3-03	CCR244CS-3-03	.27
		.188-.250	.318	.437	CCR244SS-3-04	CCR244CS-3-04	.34
		.251-.312	.380	.500	CCR244SS-3-05	CCR244CS-3-05	.41
		.313-.375	.443	.562	CCR244SS-3-06	CCR244CS-3-06	.48
		.376-.437	.505	.625	CCR244SS-3-07	CCR244CS-3-07	.55
		.438-.500	.568	.688	CCR244SS-3-08	CCR244CS-3-08	.62

NOMINAL RIVET DIAMETER	HOLE SIZE & DRILL	GRIP RANGE	L ±.010	F MAX	COUNTERSUNK HEAD RIVET		INST. WT. #/M
					STEEL	CRES	
1/8" (-4)	.129 (#30)	.046-.062	.160	.343	CCR244SS-4-01	CCR244CS-4-01	.49
		.063-.125	.222	.406	CCR244SS-4-02	CCR244CS-4-02	.60
		.126-.187	.285	.468	CCR244SS-4-03	CCR244CS-4-03	.71
		.188-.250	.347	.531	CCR244SS-4-04	CCR244CS-4-04	.82
		.251-.312	.410	.593	CCR244SS-4-05	CCR244CS-4-05	.93
		.313-.375	.472	.656	CCR244SS-4-06	CCR244CS-4-06	1.04
		.376-.437	.535	.718	CCR244SS-4-07	CCR244CS-4-07	1.14
		.438-.500	.597	.781	CCR244SS-4-08	CCR244CS-4-08	1.25

① Material designation refers to chemical composition only.

② See Technical Data Section for Special Finish Codes.