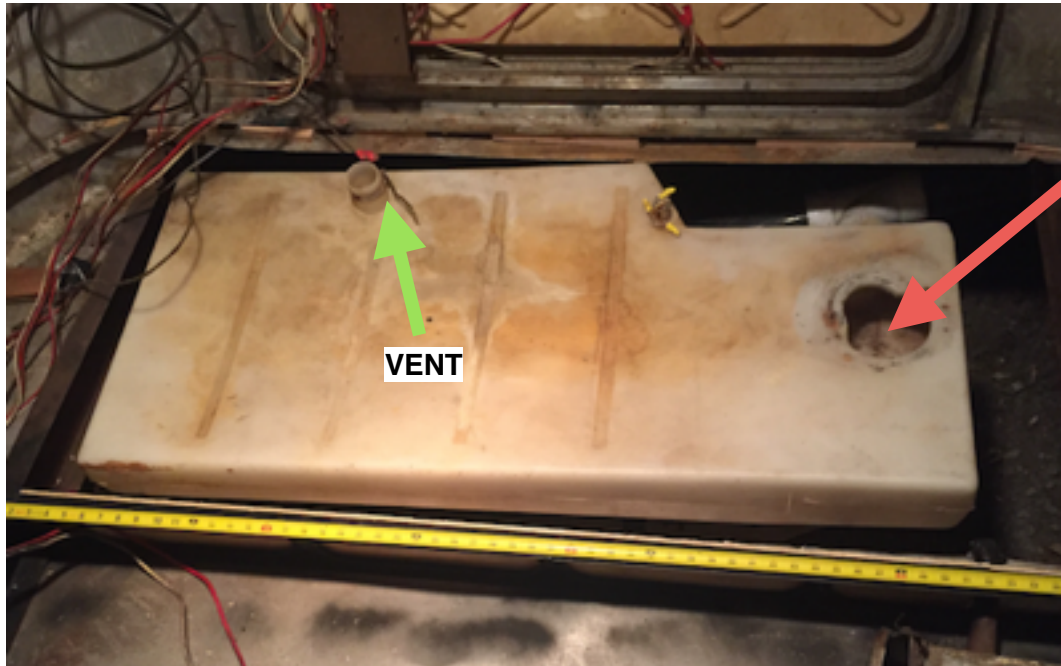


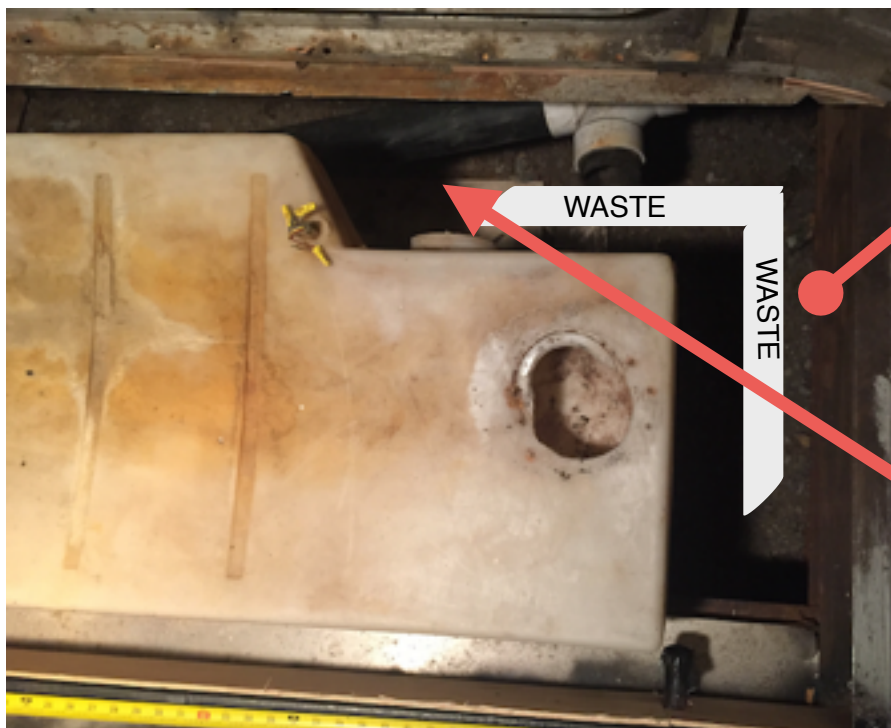
1969 Airstream TradeWind

Removed BLACK Tank below - Labeled "H4 INCA " (No Grey in 69 Trailer)

Looking for new H4 tank WITHOUT Toilet waste from INCA Plastics



Thinking I will install new GREY tank sub floor/above belly pan and move over curb side a bit to open space for black tank PLUMBING? (see below)



Thinking I may add a custom BLACK tank **above the floor** and use this space to run sub-floor/above belly pan plumbing?

Connect BLACK waste pipe to the GREY waste pipe here back into the bumper tray?

It seems common practice to run GREY water tank waste pipe right to this location (not into the tank directly)? Guess with the valve closed, the water just fills the tanks or can drain to hook up?