

SHELL TO CHASSIS SEPERATION

Frame separation at the rear of the trailer is indicated by the chassis of the trailer dropping away from the shell or body.

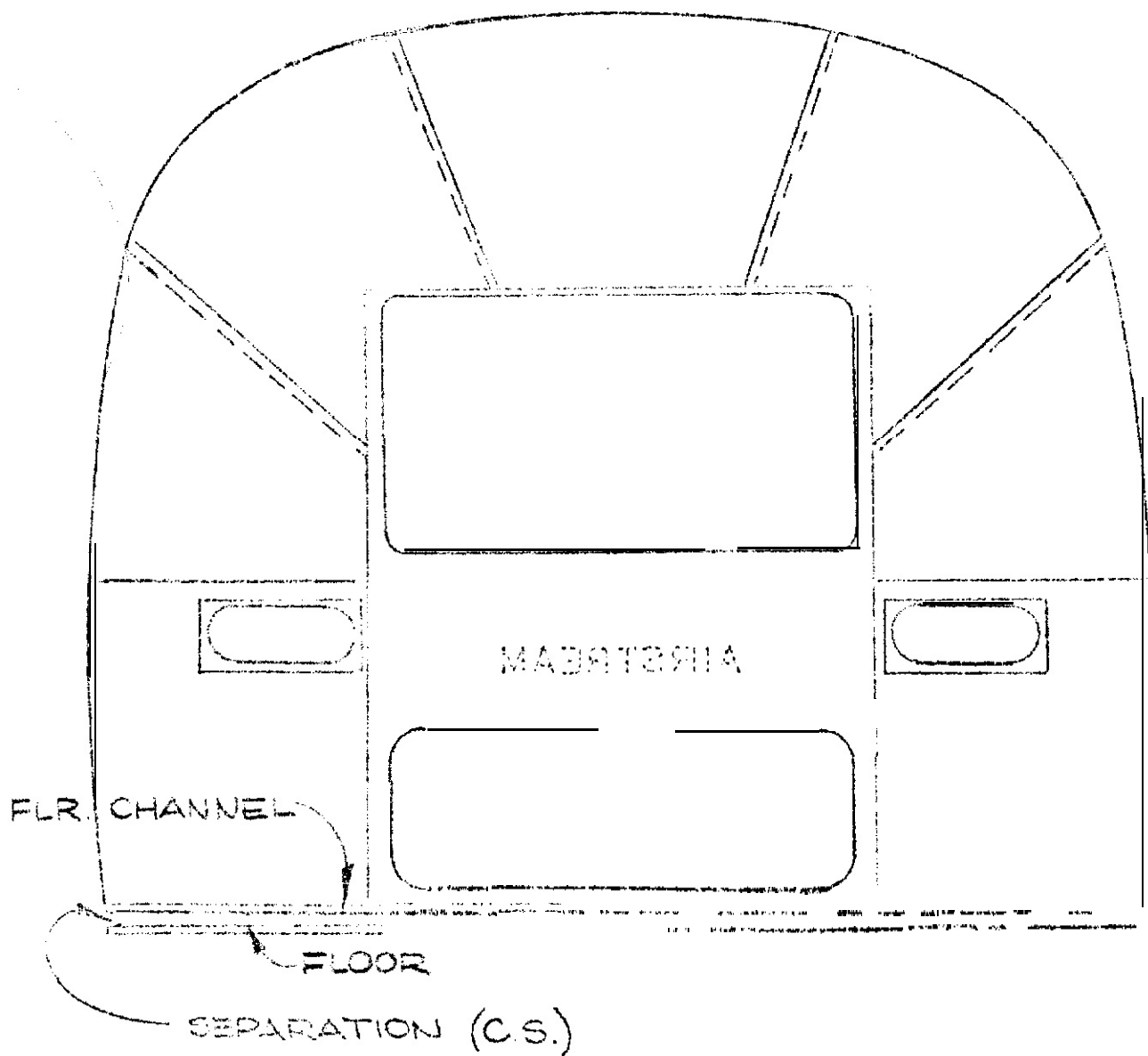
- To correct **1969 - 1970 - 1971 - 1972** - Models -

- (1) Remove rub rail from rear of trailer.
- (2) Cut 3" square hole directly above main frame, starting at bottom of rear sheet. (See figure # 1B) Be sure not to cut floor channel.
- (3) Remove rivets from sewer hose carrier pan bottom, (using a # 30 drill) and remove pan from trailer.
- (4) Place floor jacks under the main frame at the rear of the trailer and jack frame up until it is back in corrected position.
- (5) Jack frame up to correct position. From underside of trailer, drill a 3/8" hole through the main frame floor and floor channel into the area between walls of the trailer.
- (6) Use a 3/8" bolt, 3" long. with a large 3/8" flat washer on the head and place from bottom side up through the hole.
- (7) On the top side, place piece 1/4" thick steel plate 1 1/2" wide, 3" long, with a 7/16" hole drilled in the center onto the 3/8" bolt which was pushed through from bottom of frame (See figure # 1C).
- (8) Steel plate should fit down in floor channel, place 3/8" lock washer nut on bolt and tighten. You may wish to use a ratchet wrench to tighten from bottom side.
- (9) After bolt is tight, place a 3 1/2" wide X 3 1/4" high patch over the 3" X 3" hole, cut at rear. Apply vulkem to patch before applying and using AD54BS pop rivets, rivet over hole.
- (10) Apply a bead of vulkem seal across rear of trailer between bottom edge of rear panel and hose carrier top.
- (11) Reinstall sewer hose pan bottom.
- (12) Around rear wraps and across rear of trailer, drill through side sheets and floor channel every 1 1/2" with a #20 drill and install AD54BS pop rivets.
- (13)** Reinstall rub rail.
- (14) Install an oblong red reflector over patched hole at rear.

NOTE :

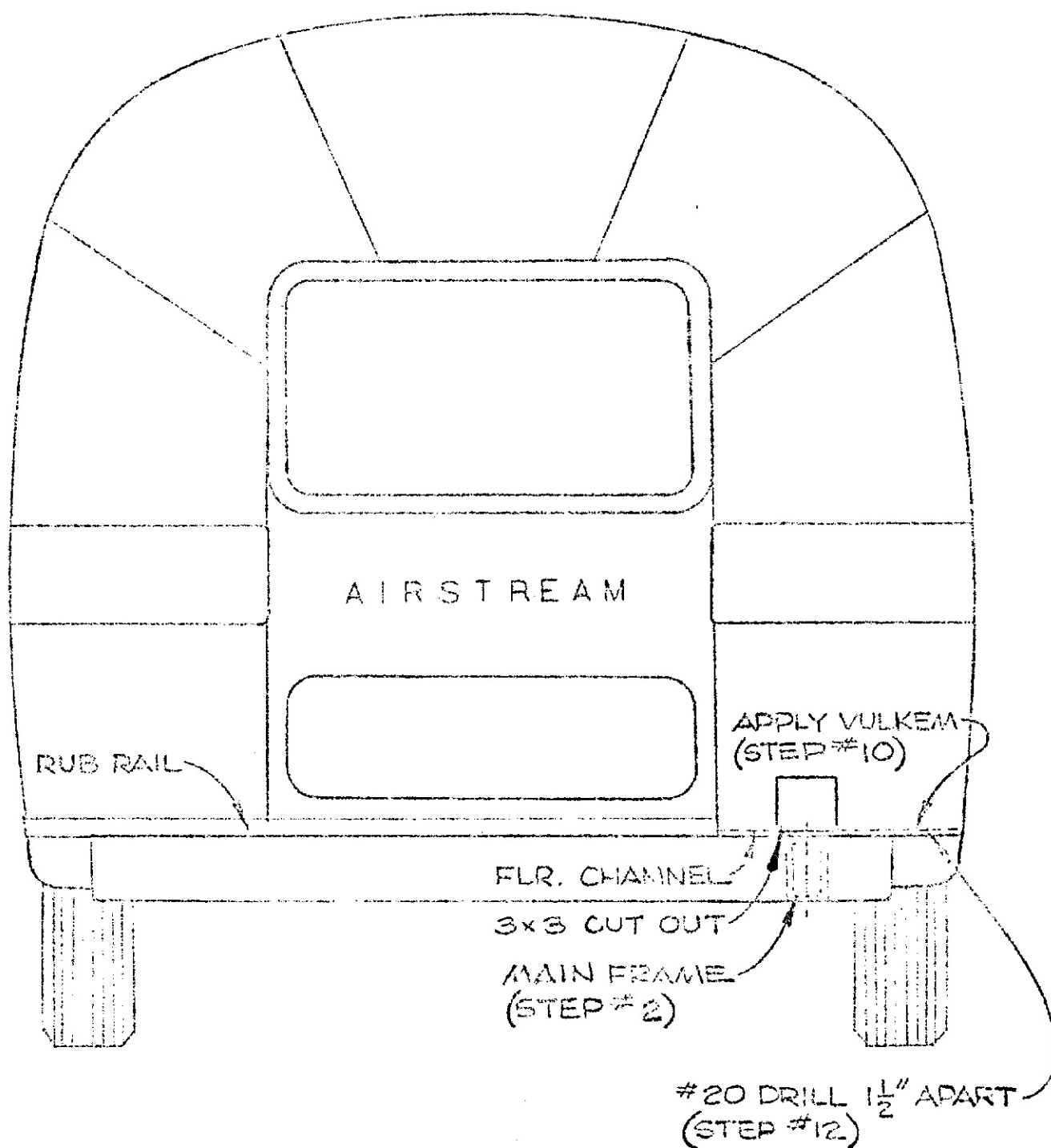
On 1972 models, the bolt may be installed, but not the 1/4" steel plate. Follow above steps to allow installation of plate. It will not be necessary to remove hose carrier bottom.

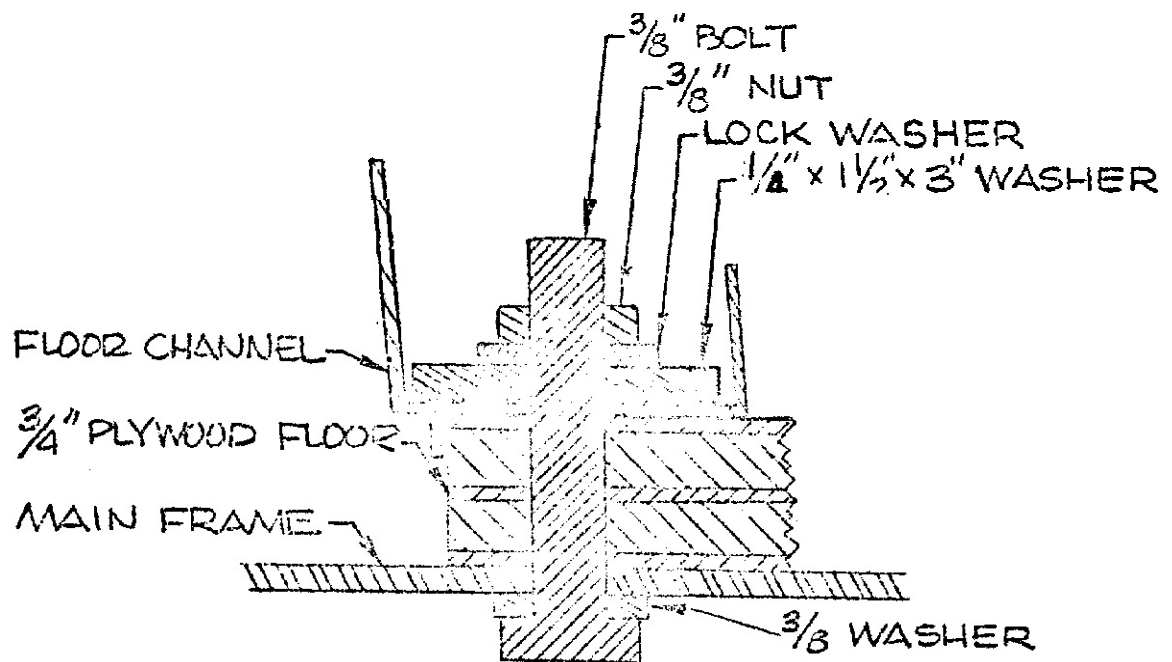
INTERIOR VIEW



NOTE :

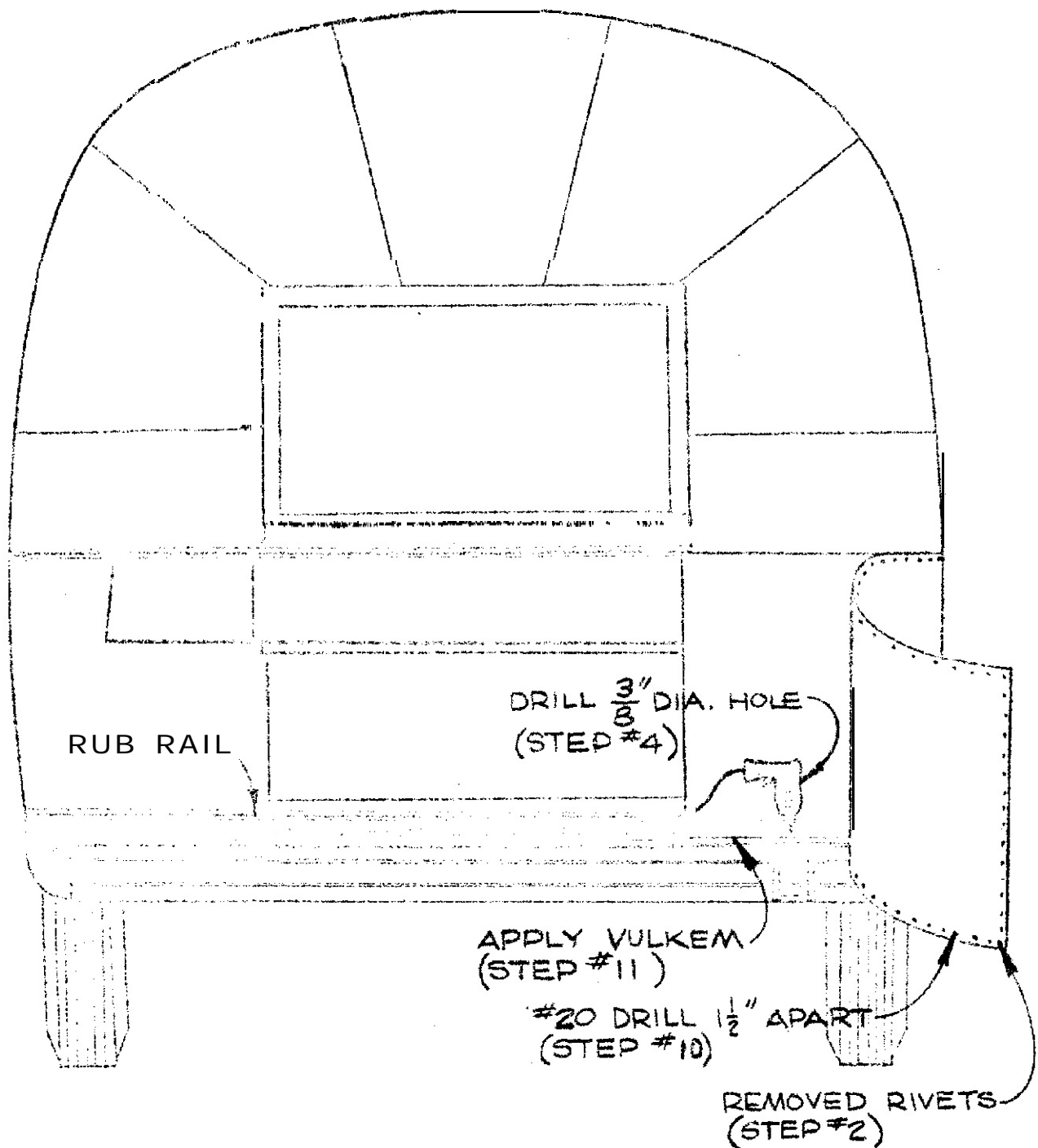
In some instances the floor channel will come loose from the shell. Both interior and exterior wraps must be re-riveted to the floor channel.





SECTION A-A
(STEP #7 & #8)

1968 & PRIOR



- FRAME SEPARATION -

1966 & Prior

1965-1972

- (1) Remove rub rail.
- (2) Drill rivets from side of panel under rear window and drill rivets from along bottom of rear wraps. This will allow wraps to be pulled out to drill floor channel. (See figure # 10)
- (3) Place a floor jack under the main frame at the rear on each side and jack rear to correct position.
- (4) With a 3/8" drill, drill through the floor channel, floor, and main frame. (See figure # 1D)
- (5) From under side of main frame, install a 3/8" bolt 3" long with a 3/8" flat washer on the head through the hole.
- (6) Place on top of the 3/8" bolt, a 1/4" thick steel plate 1 1/2" 3" long. The steel plate will fit into the floor channel.
- (7) Install a 3/8" lock washer and nut and tighten.
- (8) Make sure floor channel is secured to plywood floor with wood screws.
- (9) Using Olympic rivets, re-rivet sides of panel under rear window.
- (10) Around rear wraps and across rear of trailer, drill through side sheets and floor channel every 1 1/2" with a #20 drill and install AD54BS pop rivets
- (11) Apply a bead of vulkem seal across rear of trailer, between bottom edge of rear pane and hose carrier top.
- (12) Reinstall rub rail.