

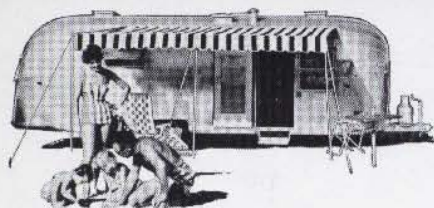
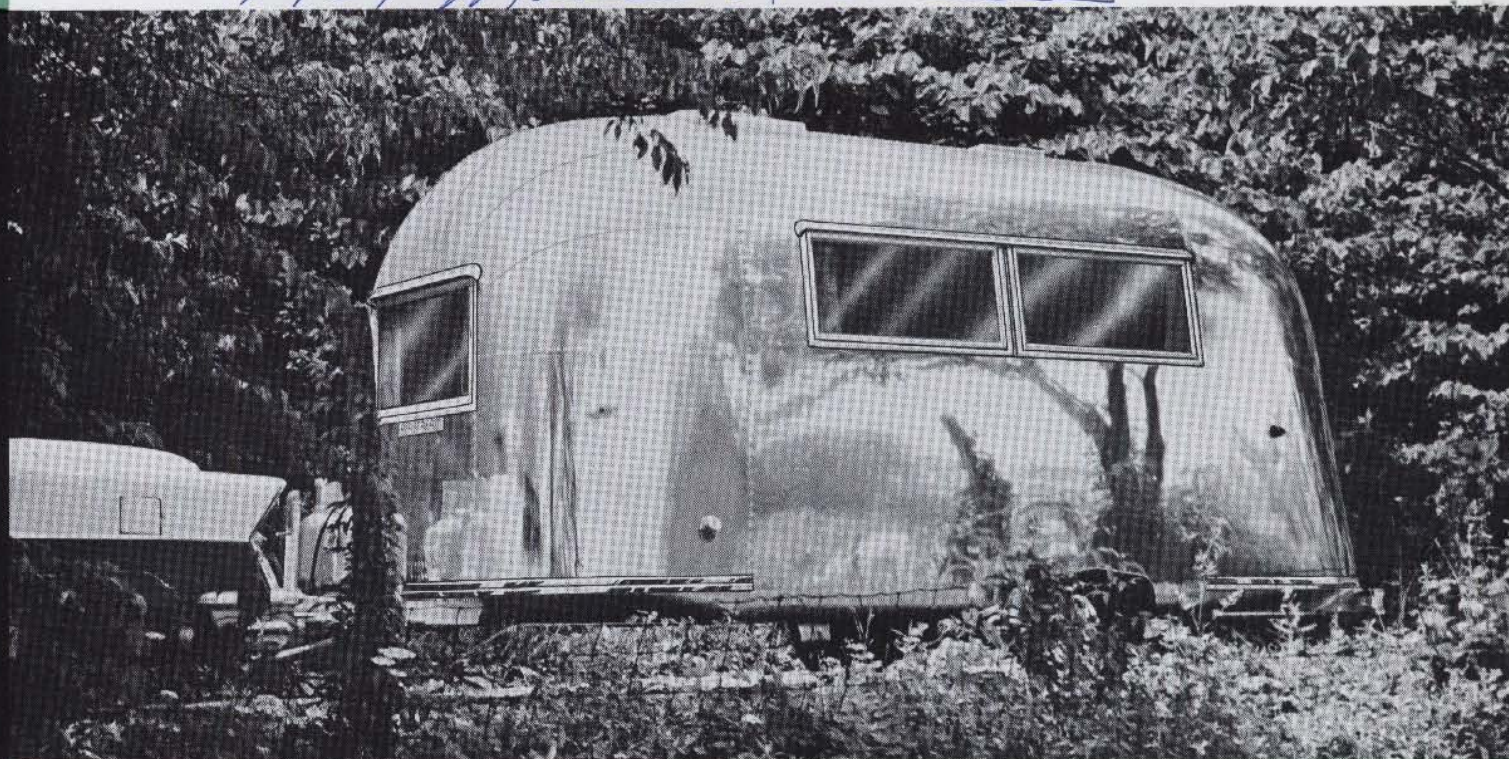
AIRSTREAM TRAVEL TRAILER

18 FT. GLOBE TROTTER

1959 Model Literature

SUPREMACY

*airstream's pre-eminence
in travel trailers is
unsurpassed by any product
in any industry. When
you own an airstream,
you know...and the world
knows...you own the finest
travel trailer built.*



*the standard of excellence
in lightweight travel trailers*

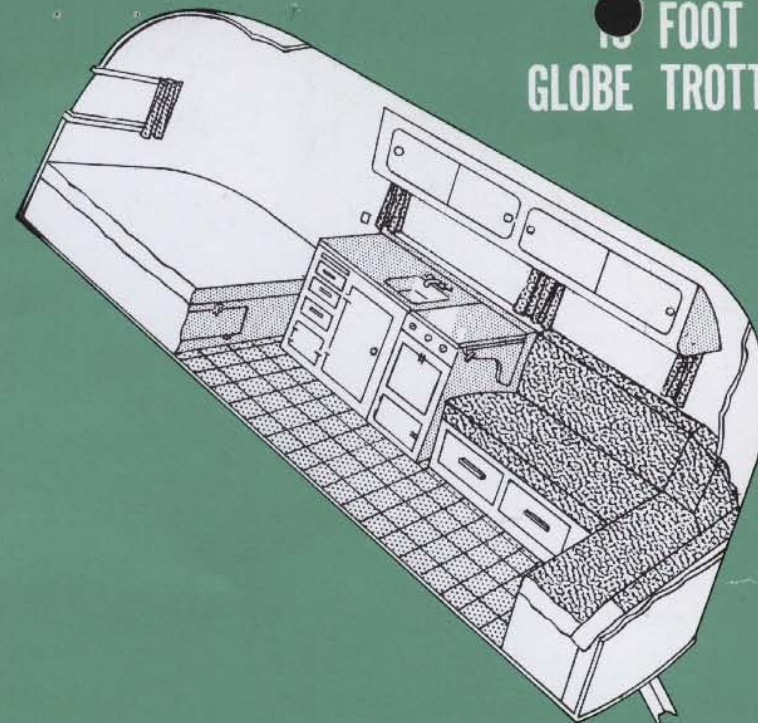
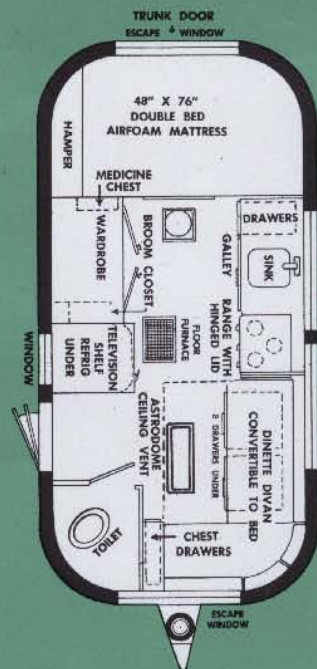
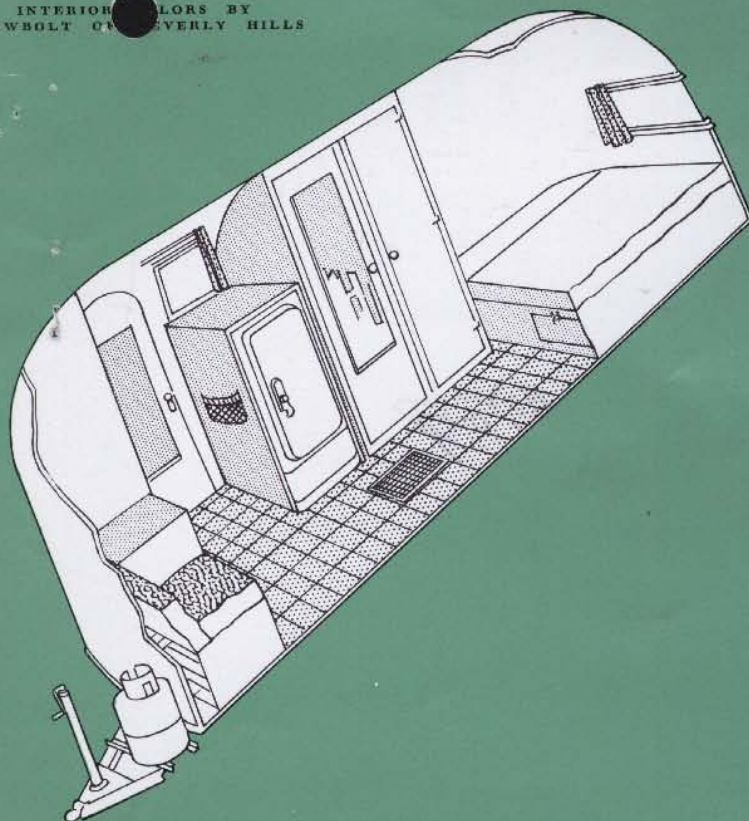
What are your plans? Weekends in the mountains, by the sea or at lake or stream; extended cross-country trips; vacation travel or an expedition into rough country? The versatile 18' Globetrotter will suit your purpose. It is compact yet roomy, light and easy to tow but has the extra conveniences ordinarily found only in larger, more expensive trailers. Airstream optional "self-containment" features make the Globetrotter a real explorer's trailer for penetration into the deepest wilds or to free you from the necessity for hook-ups in areas nearer civilization... lights, water, refrigerator, toilet, all independent of outside sources. The name Globetrotter has been earned on the roads of three continents where Airstream all-metal, all-riveted construction has been proven best under extreme conditions. The Globetrotter will put you on the road to travel adventure and enable you to see more, do more, have more fun... for years to come.



AIRSTREAM

TRAILERS, INC.

JACKSON CENTER - SHELBY COUNTY, OHIO



EXPERIENCE PROVEN LAYOUTS WITH CARAVAN TESTED EQUIPMENT

ALWAYS THESE FAMOUS AIRSTREAM FEATURES...

- all steel undercarriage
- structural alloy aluminum shell frame
- hand riveted double shell structural alloy aluminum body
- all-over 2 in. aircraft type fiberglass insulation
- vibration-proof fastenings
- see-thru safe rear vision
- 6 in. airfoam mattresses on all beds
- shock absorbers on all wheels

The ultra-sleek, streamlined appearance of Airstream travel trailers is due in part to the use of jet plane type "stretch-formed" front and rear panels (patent pending). This exclusive process distinguishes Airstream from any other trailer and guarantees the strongest possible lightweight construction and quality unmatched in the industry.

Overall length — 18 ft.
Body length — 15 ft. - 4 in.
Overall weight — 2,180 lbs.
Hitch weight — 300 lbs.
Comfortable Airfoam dinette lounge, converts to double bed.
Butane range, 3 burner, oven, broiler.
4 cu. ft. ice-electric refrigerator combination.
Porcelain single sink.
Butane floor heater.
Inlaid linoleum tiled floor.
60" Roof locker, 9 drawers.

5 clearview, full-opening windows with removable screens.
Two roof vents. Large plastic Astro-Dome in front.
Imported hardwood furniture.
Spacious wardrobe and closet for household appliances.
Butane tank, rack and regulator.
Light weight, warp-free hollow core cabinet doors.
Touch control, built-in step.
Imported "Sta-Closed" closet catches.
Trunk compartment in rear.
8 ft. awning rail.
Electric brakes, can be coordinated with foot brake pedal in car.

Steel bumper.
Folding table.
12 Volt Battery Light.
Marine type flushing toilet.

OPTIONAL CONVENIENCE FEATURES

In addition to pressure water system, septic tank, gas refrigerator and gas water heater . . . a great number of other optional extras are available to make your Airstream even more self-contained and convenient. See your dealer for full particulars.

SINCE 1932 THE WORLD'S FINEST LIGHTWEIGHT TRAVEL TRAILERS