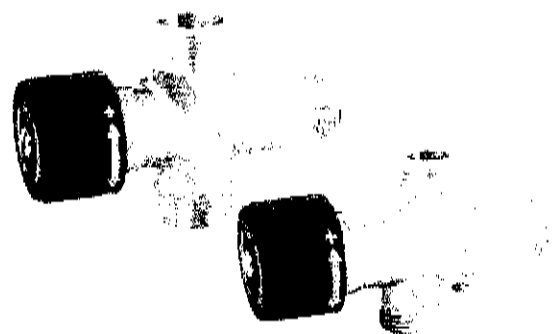


LK 550 Mixing Valve



TECHNICAL DATA

Working temperature	Min. +5°C/Max. +90°C
Operating temperature	Min. +38°C/Max. +65°C
Max. working temperature	1.0 MPa (10 bar)
Material, valve body	DZR Brass EN 12165 CW602N
Material, sealings	EPDM

LK 550 is a mixing valve for water heating with a thermostatic element that regulates the supply of cold water in order to achieve the desired temperature. Self-circulation is prevented with a check valve installed in the cold water supply - see under Accessories. Valves with male thread G 1/2" and 15 mm compression fitting have an airvent for simple draining of smaller water heaters.

Arrows on the valve body indicate the direction of the flow.

- KV = incoming cold water
- VV = incoming hot water
- BV = outgoing warm water

When fitting to a male thread connection adapter LK 373 is used - see under Accessories.

When fitted on top of boiler/storage tanks with built-in water heaters the valve should be installed with some space between boiler/storage tank and valve so as not to let the function of the valve be affected by heat radiation.

The valve knob is used to set the desired warm water temperature within the range of 38°C to 65°C. The maximum temperature can be calibrated as follows:

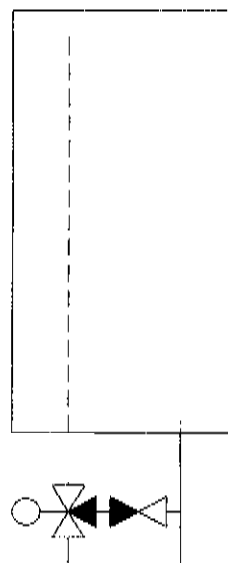
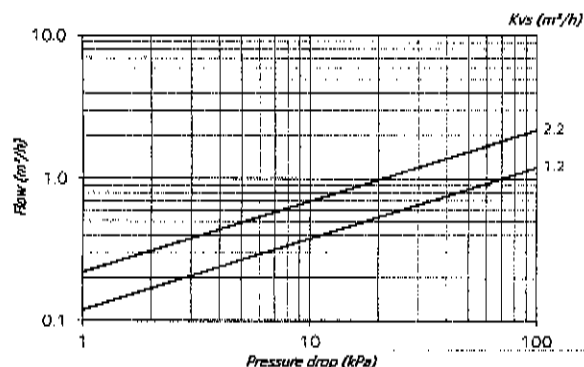
INCREASING THE MAXIMUM TEMPERATURE:

Turn the knob anticlockwise to (+). Loosen the screw and move the knob out to the side. Then turn the knob clockwise to (-) without it being engaged. Adjustments are carried out in small steps. A 1/4 turn corresponds to approximately 7°C. Reinstall the knob and check that it engages with the teeth. Tighten the screw and then turn the knob to max (+). Max. calibration for increasing the temperature is a 1/2 turn.

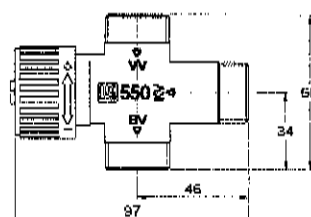
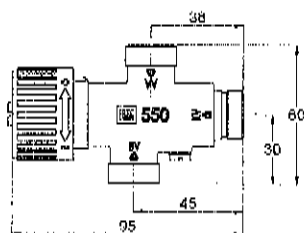
REDUCING THE MAXIMUM TEMPERATURE:

Do the procedure in reverse. Turn the knob clockwise to (-) and the disengaged knob anticlockwise to (+).

CAPACITY DIAGRAM

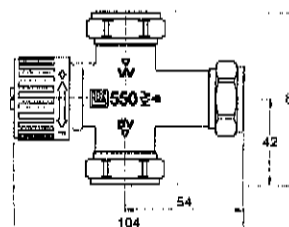
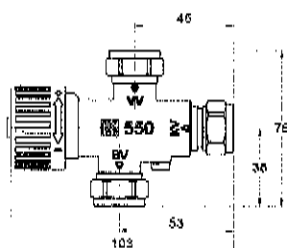
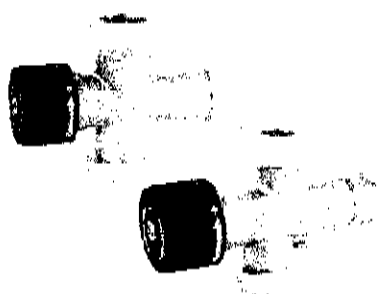


- MALE THREAD



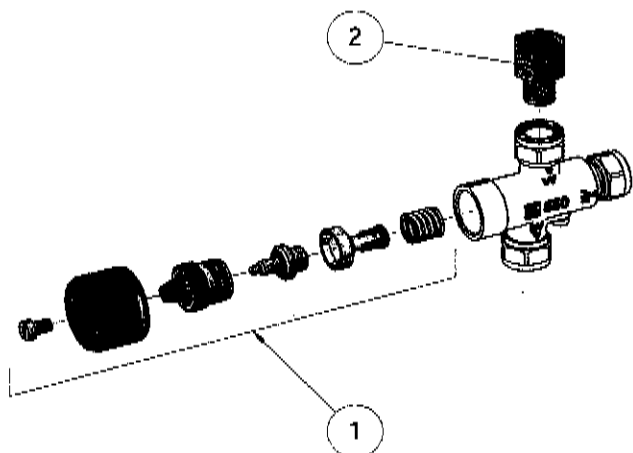
Article number	Dim.	Kvs m ³ /h	Weight kg
090206	G ½"	1.2	0.3
090063	G ¾"	2.2	0.4

- COMPRESSION FITTING



Article number	Dim.	Kvs m ³ /h	Weight kg
090200	15 mm	1.2	0.3
090205	22 mm	2.2	0.4

SPARE PARTS AND ACCESSORIES



Article number	Article	Position number
4920723	LK 683 Repair kit	1
1898022	Adapter LK 373 15xG½"	2
1898055	Adapter LK 373 22xG¾"	2
055008	Check valve NN ½"	Not depicted
055009	Check valve NN ¾"	Not depicted
092105	Cartridge Check valve 15 mm	Not depicted
092103	Cartridge Check valve 22 mm	Not depicted