

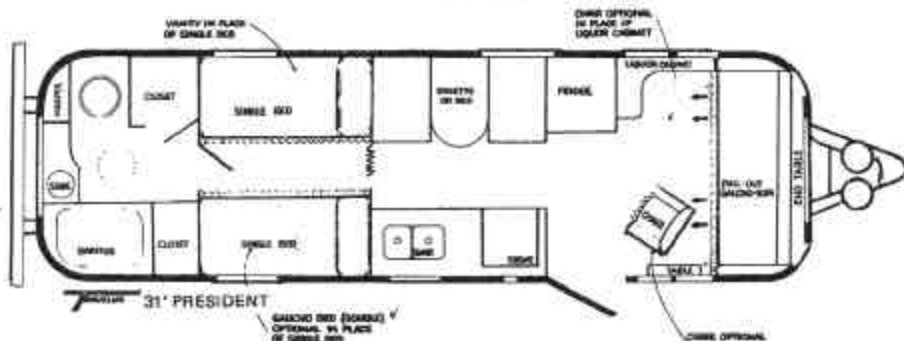
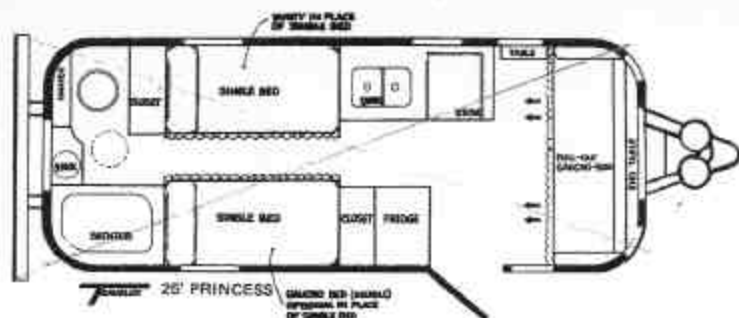


TRAVELUX

**THE SUPERB
LUXURY
TRAVELUX
TRAILER**

**The incomparable Canadian Coach
designed to give you a carefree lifestyle
in all seasons anywhere in the world.**

Specifications to help you choose the model best suited for you:



For Strength and Durability: 3 frame box girders are minimum of 5" x 2" / Arc welded basket weave every 24". / Ribs of extruded aluminum shaped on our special machines. / Back and front body shells cut and aircraft riveted into one piece. / All joints vinyl-sealed, tight as an egg. / Moulded wheel wells prevent corrosion. / Aluminum belly is undercoated. / All aluminum aircraft construction for lightness, strength. / Coupler, 20,000 lbs. capacity, with 2 5/16" ball.

All-weather Insulation against Heat and Cold: 5" of insulation under floor, sealed in above and below. / Microtite-insulation in walls, same material as used in modern planes, bonded to the aluminum, covers entire vehicle.

Heating, Cooling and Ventilation: Forced-air sealed-combustion furnace with ducting in baseboard to distribute heat evenly over full length of trailer. / Wall Thermostat controls heat as in modern apartments or homes. / Powered roof-vents provide excellent ventilation from kitchen, bathroom and living-room areas. / Roof vents of glare resisting Lucite. / Full size screen area in combination double door. / Air Conditioning.

For Luxurious, Relaxed Comfort: Deep-pile, durable broadloom covers all floors in Custom series. / Seating and beds designed for restful living. / Best quality 5" foam used in cushions. / Choice of chesterfield and fold-away table or dinette, depending upon floor plan. / Beautiful hand-crafted furniture with wood grain surfaces. / Colour co-ordinated interiors to your choice. / Vinyl wallcovers. / All upholstery and drapes tailored in our own plant. / All Travelux models sleep 4, or 6 with fold-away bunk beds. / Cupboard and closet accommodation is remarkable, plenty of room for dishes, foods, cooking utensils, personal things and clothes. / A hot bath or shower is a ready comfort, for there is ample running hot and cold water. / 3-piece bathroom.

For Easy Housekeeping and Cooking: Ranges cook with propane gas. Automatic ovens. / Refrigerators also use propane gas or electricity. / Sinks - stainless steel - choice of single or double. / Hot and cold running water. / Covers for sink and range give you extra working surface. / Cupboards designed to hold everything safely in place as you travel.

For Good Light - Day or Night: One-way safety plexiglass windows offer privacy wherever you park - for you can see out - but they can't see in. / Vista windows have transparent cover-guards for easy cleaning. / Combination double-door is contoured, with full screen area. / Front windows have awnings to provide shade in the living area. / Interior lights are placed conveniently, for easy reading and living. / Light-over-door is nice when stepping out at night. And there are backup lights, too.

For Dependable Facilities: All lights and fans operate on a 12-volt power system, from two heavy-duty batteries. / These batteries automatically recharge as you travel. Or if you have a power supply in camp, there is a built-in converter which lets you recharge them from the camp's electric outlets. A special heavy duty cable is provided to plug into the camp's electric outlet and you use the electricity just as you would at home. / Water pump is automatic demand type and completely silent. / All water lines are copper tubing. Built in check valve and pressure reducing valve for lifetime service. / Gas is supplied by two 30-lb. propane tanks with automatic change-over. / Convenient instrument panel gives you easy reading and control of electrical and water facilities.

Equipment Standard on Custom Models: Awnings / Air Conditioner / Battery Powered Hitch Jack / Spare Tire Wheel and Hub Cap / Spare Tire Carrier / TV and Radio Antenna / Extra Battery / Stereo System.

Also Available at extra cost: Storm Windows / Extra Awnings / Chairs / and many other custom appointments.

Model	Series	Length of Trailer		Overall Weight	Hitch Weight
		Outside	Inside		
T-31	President	31 ft.	27 ft.	4780	680
T-29	President Elite	29 ft.	25 ft.	4550	580
T-25	Princess	25 ft.	21 ft.	4400	500

*All prices and specifications subject to change without notice.

ALL MODELS

Width at floor	7' - 6"	Hitch Height, top of ball	18"
Body Length	27'	Ball Size	2 5/16"
Overall Height	8' - 3"	Tire Size	H78-14
Overall with Air Conditioner	9' - 4"	Rated Load	B
Inside Height	6' - 6"	Tire Pressure	30 lbs.

TRAVELUX

416) 775-5548

401 DISSETTE ST., BRADFORD, ONTARIO



THE ALL CANADIAN COMPANY.