

### **General Information and Directions:**

Please use the following sets of directions as a guide to reach the various campgrounds and geode beds. I will be arriving on Friday morning 3/22 into the Wiley Well campground, and will definitely have intermittent cell phone reception up until then. Once I depart from I-10, I can't guarantee that there will be cell reception, but you can attempt to reach me at (408) 656-6508.

Above all else, when packing for this trip, please make sure to bring plenty of water. Even though it's March, it will be over 80 F in the desert, and you will want it. The campground may have some, but it is not guaranteed nor is it recommended for drinking due to mineral content.

Plan on driving to the Wiley's Well Campground unless you see signs that say *Boondocking for Geodes* has been moved due to lack of site availability. Also note that we will likely be out at the geode beds during the afternoon on Friday and then Saturday after ~9am, so if you arrive during those timeframes and wish to meet up with us, look for a note of our location posted on a tiny trailer ('59 Pacer):



### **Directions to Wiley's Well Campground (Primary Location)**

From desertusa.com:

"To get there, drive to the Wiley's Well Road exit from Interstate Highway 10. It is located about 16 miles west of Blythe, California. Immediately to the north is a rest area. You will turn southward. From the center of the overpass, at 33°36.466' N by 114°54.101' W, drive some 2.9 miles south to a stop sign at 33°34.183' N and

114°53.882' W. The paved road turns right to provide access to two state prisons, Chuckawalla Valley and Ironwood. To reach the campground, continue southward on Wiley's Well Road. A small sign indicates camping ahead. The road from this point to the campground entrance consists of graded earth. Unless it is raining or it has rained recently, it should be passable for virtually all types of vehicles. If the road has not been graded within the previous two or three weeks though, it is likely to be seriously wash-boarded. You will pass the entrance to the Wiley's Well Campground and the junction with the Bradshaw Trail at 33°29.613' N by 114°53.256' W and 33°29.457' N by 114°53.278' W, respectively."

### **Directions to Coon Hollow Campground (Secondary Location)**

From desertusa.com:

"Immediately south of the Bradshaw Trail is a short stretch of very sandy road. Usually it is not a problem, but you may wish to check it before proceeding. Continue southward on Wiley's Well Road, past a dump station for recreational vehicles at 33°28.349' N and 114°53.587' W and the turn-off to the Opal Hill fire agate mine at 33°26.998' N by 114°53.616' W. Approximately 12.1 miles south of Interstate 10 you will reach a prominent sign on the right marking the entrance to Coon Hollow Campground at 33°26.737' N and 114°53.696' W. Turn right and drive westward not quite 0.5 mile to the campsites."

### **Digging for Geodes – Friday afternoon/ Saturday all day:**

### **Directions to Hauser Geode Beds (Primary beds, largest, easiest)**

Adapted from huberism.com:

To reach the Hauser Geode Beds from Interstate Highway 10, turn south onto Wiley's Well Road, the exit for which is approximately fifteen miles west of Blythe, California. About three miles south of the divided highway, the paved road turns sharply right toward two state prisons, but you will want to continue southward on the graded dirt road. Some 13.5 miles south of the freeway you will reach the Riverside-Imperial County line. Your GPS coordinates should read N 33°25'48" by W 114°54'11".

Wiley's Well Road becomes Milpitas Wash Road in Imperial County, though there may not be a sign to indicate the name change. On the other hand, you should see a sign indicating that the Hauser Beds are to the west. It was erected in early 2000 by the California Federation of Mineralogical Societies.

Follow the directions offered by the sign and, immediately south of the county line, turn right onto the track that angles southwest across the desert pavement. This will lead you slightly more than a half mile to what is generally known as the Black Hills Road at N 33°25'26" by W 114°54'37". Bear right, and continue on the most traveled road past a metal sign post marked "Ashley Flats." From this sign post, until you reach the road to the Potato Patch about 2.5 miles ahead, you will be traveling over the old, alternate Palo Verde-Glamis wagon road used by George Hauser when the regular road had washed out.

Continue driving in a generally westerly direction to a second metal sign post at a wye in the road. Your GPS coordinates should be close to N 33°24'49" by W 114°58'09".

Located about 4.5 miles from Milpitas Wash Road (or Wiley's Well Road), this is Middle Camp. Take the left fork of the wye and cross the gravel bed of the Black Hills Wash. In one mile you will reach another junction at N 33°24'07" by W 114°58'41". This one is unmarked. The road straight ahead goes to the geode and nodule beds known as The Potato Patch. Black agate and geodes containing black calcite crystals may also be found along branches of this road.

To continue toward the Hauser Geode Beds, though, turn right and cross a little wash. In approximately three-fourths of a mile, at N 33°23'43" by W 114°59'16", the road ends at another that crosses at right angles at a point called Nodule Junction. Turn right. From this point onward, for the next 2.5 miles, several roads will lead off to the right of the most traveled road. They all go toward different areas of the geode beds.

Disregard the first one, though. It will be only two-tenths of a mile ahead, at N 33°23'42" by W 114°59'25". While it used to be the main road leading to the north end of the Hauser Geode Beds, it goes through private property, the owner of which closed it to public access late last year (2000). Maybe he got tired of the dust raised by passing vehicles, or, in this day of lawsuit-prone individuals, he may be concerned about possible liability should something go awry, or he may simply prefer total privacy. Some rockhounds who have passed through the entrance to his property have been escorted off with a stern lecture about property rights. The Bureau of Land Management is aware of the situation and expects to act should the property owner do anything illegal. Thus far, though, he has only exercised his own rights. We should respect them.

Those who wish to do so may still visit the northern part of the Hauser Beds by turning west onto the next road, at N 33°23'24" by W 114°59'24", about seven-tenths of a mile ahead. While it goes to the central part of the geode beds, a foot trail leads northward from a small parking area at the edge of a steep-sided wash. Moreover, about halfway between the junction and the parking area, a small cairn marks the beginning of a rough, jeep road to the north end. Just respect private property rights by staying south of any fence lines or survey stakes that you may come across in the region.

From Nodule Junction, the most traveled road continues some 2.5 miles to the south end of the Hauser Beds, at N 33°22'34" by W 114°59'23". This is where, while he and his two friends set up camp, Joel Hauser noticed thundereggs galore in the volcanic ash lining a wash. Unless you have a high-clearance, four-wheel-drive vehicle, you probably should park on the desert pavement on the east side of that wash.

### **Directions to Potato Patch Beds (Alternate location, different types of geodes)**

From desertusa.com

To visit the Potato Patch, from Blythe, California, drive west on Interstate Highway 10 approximately 16 miles to the Wiley's Well exit, then 13.3 miles south to the Riverside-Imperial county line at 33°25.800' N and 114°54.180' W. Wiley's Well Road becomes Milpitas Wash Road in Imperial County. Immediately south of the county line, at 33°25.794' N by 114°54.182' W, turn right onto the track that angles southwest across the desert pavement. This will lead you slightly more than a half mile to what is generally known as the Black Hills Road at 33°25.429' N and 114°54.620' W. Bear right, and continue on the most traveled road past a metal signpost marked "Ashley Flats" straight ahead and "Gerdes Trail" to the north.

Continue driving in a generally westerly direction to a second metal signpost, this time marked only “Ashley Flats,” at a fork in the road located about 4.5 miles from Milpitas Wash Road (or Wiley’s Well Road). Your GPS coordinates should be close to 33°24.825' N and 114°58.145' W. To continue toward the Potato Patch take the south fork of the wye and cross the gravel bed of the Black Hills Wash.

In one mile you will reach another junction at 33°24.121' N and 114°58.679' W. Known as Potato Patch Junction, this is where those going to the Hauser Beds turn off the road you have been following. One short stretch of road just before you reach the intersection is rough, but if you pick your course carefully and take it slow and easy, you should have no trouble.

Drive southward – straight ahead – from Potato Patch Junction six tenths of a mile to a hardly noticeable road that leads off to the left to the Owl’s Roost area at 33°23.567' N and 114°58.811' W. There, if you look at the upper western slope of the hill to your left you will see sign of disturbed earth. This marks the northern extreme of the Potato Patch. Continuing southward across desert pavement, about three tenths of a mile ahead is a fork in the road at 33°23.357' N and 114°58.766' W. To continue exploring the Potato Patch, proceed southward as much as a mile or so on either road.

If you take the east fork, you will reach a junction two tenths of a mile ahead, at 33°23.232' N by 114°58.589' W. To continue on the eastern Potato Patch road, turn left. The first serpentine outcrops are about four tenths of a mile ahead. Of course, you will drive by several thunderegg digs before you get that far.

Geodes and nodules from the northern reaches of the Potato Patch tend to have more colorful agate interiors than those collected from the southern portion. Although they may be found almost anywhere, those found in the southern area tend more toward hollow interiors with calcite crystal linings.

### **Suggested Equipment**

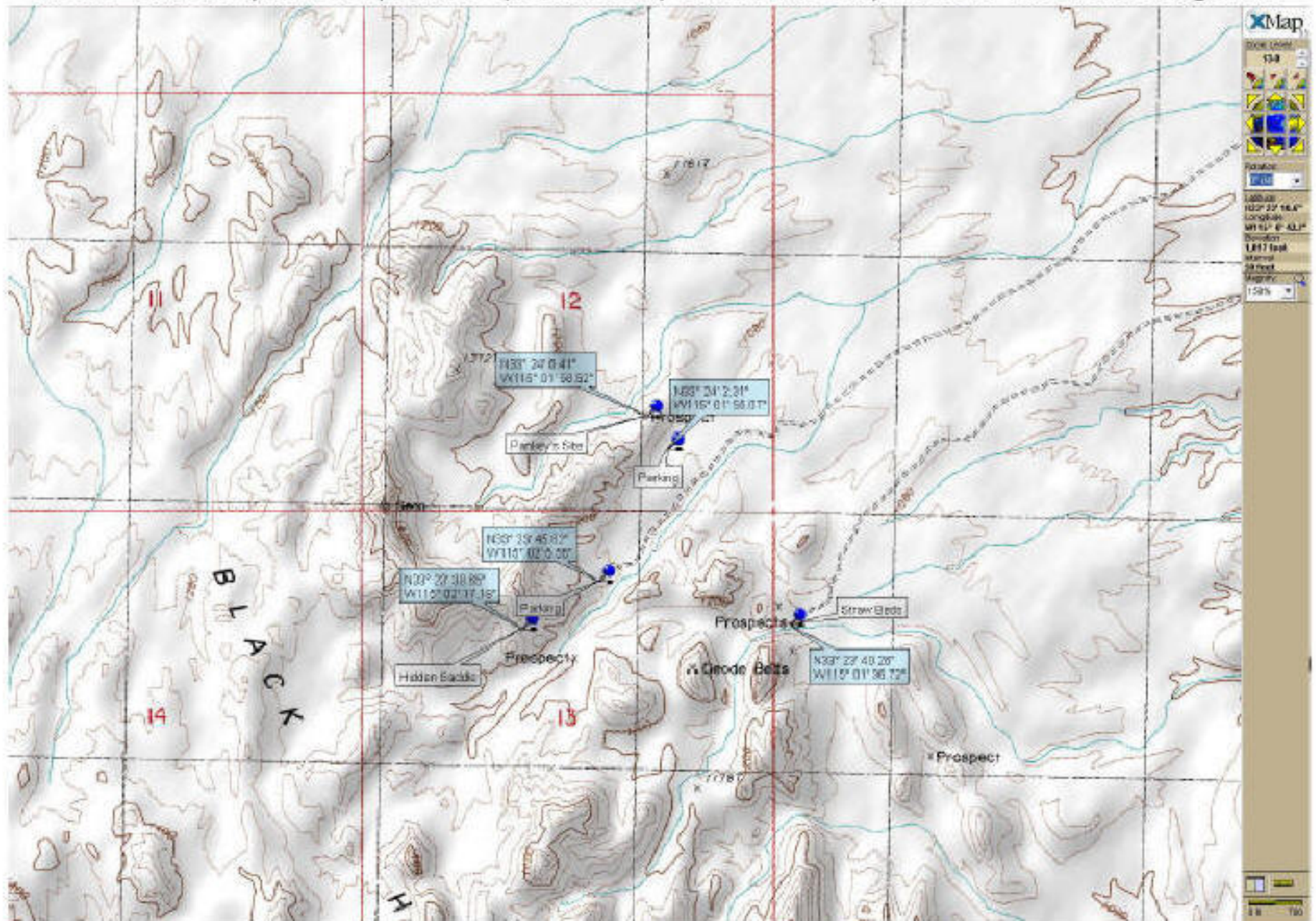
- Geological pick/ hammer combo
- Rock chisels and medium to heavy weight hammer
- Shovel
- Pick axe
- Breaking bar/ pry bar (longer and heavier, the better)
- Sledge hammer
- Bucket for your finds
- Heavy cloth blanket to sit on while working
- Beach umbrella?
- Cooler with beverages?

**Appetizer Potluck on Saturday evening**, so if you would like to participate, just bring some finger foods. Having dessert for dinner is okay too ☺

*Hope to see you there, **Peter and Marie** (Airforums: worldinchaos) 408-656-6508*



# Area 2 --Hauser 1, Hauser 2, Hauser 3, Corn Fields, Cinnamon Beds, & Potato Patch collecting areas





The following table contains many GPS coordinates for the area. Our targets will be the Hauser Dig Sites and the Potato Patch.

LAT	LONG	Pankey Title	Pankey's REF#			Actual Location Label	DEG	MIN	SEC	DEG	MIN	SEC	Manually Entered Data From Pankeys Original Data			
Calc.	Calc.			Calc.	Calc.		Man.	Man.	Man.	Man.	Man.	Man.	Man.	Calc.	Man.	Calc.
DDMM.MMMM	DDMM.MMMM			DD.DDDDD	DD.DDDDD		D	M	S	D	M	S	FRAC	SECONDS	FRAC	SECONDS
3325.8000	11454.2700	WWCAMP	CAMP	33.430000	-114.904500	Good Camping / Parking	33	25	48.00	114	54	16.20	0.8000	48.00	0.2700	16.20
3322.5480	11459.2110	HAUSERPK	A	33.375800	-114.986850	Hauser 1 Parking	33	22	32.88	114	59	12.66	0.5480	32.88	0.2110	12.66
3322.7883	11459.5700	HAUSERBD	A	33.379806	-114.992833	Hauser 1 Dig Site	33	22	47.30	114	59	34.20		0.00		0.00
3322.9183	11459.7100	HAUSER2		33.381972	-114.995167	Hauser 2 Dig Site	33	22	55.10	114	59	42.60		0.00		0.00
3323.1300	11459.1100	CORNFLDP	B	33.385500	-114.985167	Corn Field	33	23	7.80	114	59	6.60	0.1300	7.80	0.1100	6.60
3323.0817	11459.6350	HAUS-ALT		33.384694	-114.993917	Hauser 3 Dig Site	33	23	4.90	114	59	38.10		0.00		0.00
3323.3000	11458.6600	POTPCHPK	C	33.388333	-114.977667	Potatoe Patch	33	23	18.00	114	58	39.60	0.3000	18.00	0.6600	39.60
3323.6700	11501.6133	STRAWBDP	F	33.394500	-115.026889	Straw Bed	33	23	40.20	115	01	36.80		0.00		0.00
3323.9100	11454.5517	PSILPKG	I	33.398500	-114.909194	Psilomelane	33	23	54.60	114	54	33.10		0.00		0.00
3322.1933	11436.4633	PETIRONE		33.369889	-114.607722	Perrified Ironwood	33	22	11.60	114	36	27.80		0.00		0.00
3324.9660	11451.9830	CLPSPGGD		33.416100	-114.866383	Clapp Springs Geode	33	24	57.96	114	51	58.98	0.9660	57.96	0.9830	58.98
3325.0420	11451.2490	LLL		33.417367	-114.854150	Larry's Lost Load	33	25	2.52	114	51	14.94	0.0420	2.52	0.2490	14.94
3325.7660	11454.2900	WPT119		33.429433	-114.904833	Good Camping / Parking	33	25	45.96	114	54	17.40	0.7660	45.96	0.2900	17.40
3323.6600	11502.2880	HIDSADI	G	33.394333	-115.038133	Hidden Saddle	33	23	39.60	115	02	17.28	0.6600	39.60	0.2880	17.28
3323.7600	11502.0960	HIDSADPK	G	33.396000	-115.034933	Hidden Saddle Parking	33	23	45.60	115	02	5.76	0.7600	45.60	0.0960	5.76
3324.1060	11501.9750	SITE E	H	33.401767	-115.032917	Pankey's Site	33	24	6.36	115	01	58.50	0.1060	6.36	0.9750	58.50
3324.0370	11501.9200	SITE E PK	H	33.400617	-115.032000	Pankey's Site Parking	33	24	2.22	115	01	55.20	0.0370	2.22	0.9200	55.20
3323.8940	11454.5640	PSILOMPK	I	33.398233	-114.909400	Psilomelane	33	23	53.64	114	54	33.84	0.8940	53.64	0.5640	33.84