



**Atwood Mobile Products LLC**  
 1120 North Main Street • Elkhart, IN 46514  
 PHONE: 574-264-2131 FAX: 574-262-2550  
 INTERNET: <http://www.atwoodmobile.com>

**LITERATURE NUMBER MPD 87297**

## LATCH REPLACEMENT

**ENGLISH, FRANÇAIS (et Canada)**

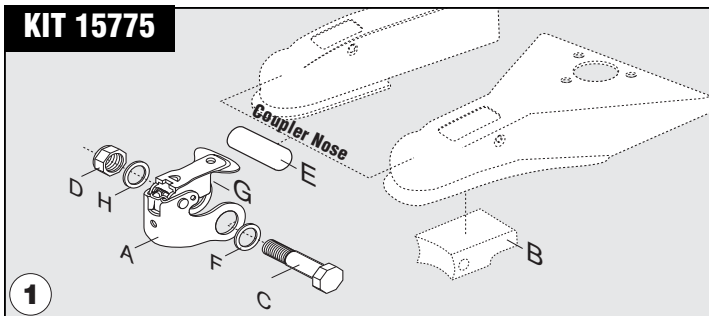
**•Installation •Operation •Maintenance**

Effective 10/10/06

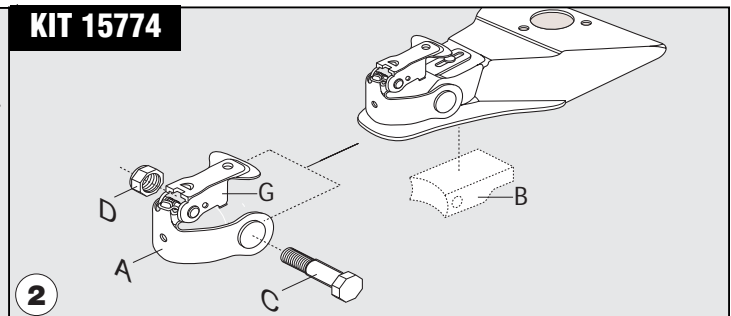
### 2" Yoke Style Coupler

### 2-5/16" Yoke Style Coupler

#### KIT 15775



#### KIT 15774



**For complete coupler instructions consult MPD 87984.**



#### WARNING

##### PERSONAL INJURY/PRODUCT DAMAGE

- Replace couplers that are worn or damaged, or not operating freely.



#### WARNING

##### PRODUCT DAMAGE

- Coupler must be disengaged from hitch ball.
- Latch must be in closed position for repairs.

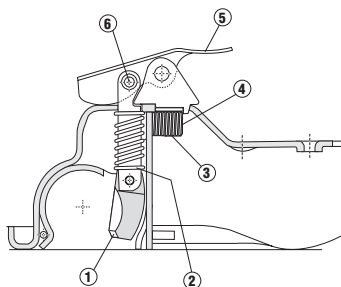
#### TO TAKE APART

1. Grind off staked end of pin (FIG 1 & 2-C) that goes through nose of coupler.
2. Slide pin out side of coupler.
3. Remove ball clamp (FIG 1 & 2-B) from under side of coupler nose.
4. Remove latch and yoke assembly from top of coupler nose.
5. Discard old parts. **DO NOT REUSE!**

#### INSTALLATION PROCEDURE

1. Place latch and yoke assembly (FIG 1 & 2) over coupler nose and align holes on yoke assembly with holes on sides of coupler nose and hold in place.
2. Place ball clamp (FIG 1-B & 2-B) inside nose of coupler and align its holes with holes in yoke assembly and holes in sides of coupler nose.
3. **For 2" coupler -**
  - a. Place insert sleeve (FIG 1-E) into ball clamp (FIG 1-B) and install under coupler nose.
  - b. Place washer (FIG 1-F) on bolt (FIG 1-C).
  - c. Align the hole in the latch yoke assembly (FIG 1 A) and insert sleeve/ball clamp assembly (FIG 1 B & E) with the hole in the coupler nose. Then install bolt assembly (FIG 1 C & F) through both sides of coupler nose.
  - d. Place other washer (FIG 1-H) and nut (FIG 1-D) on exposed threaded portion of bolt and torque nut to 15 ft. lbs.
3. **For 2-5/16" coupler -**
  - a. Place ball clamp (FIG 2-B) under coupler nose.
  - b. Align the hole in the latch and yoke assembly (FIG 2-A & G) and ball clamp (FIG 2-B) with the hole in the coupler nose. Install the hole in the coupler nose followed by the bolt (FIG 2-C).
4. Check coupler for proper latching on a proper diameter ball. Insert ball, close coupler. The two legs of the latch handle (FIG 1 & 2-G) MUST fit snugly into the mating 2 slots on top of the coupler.

#### "Marvel"



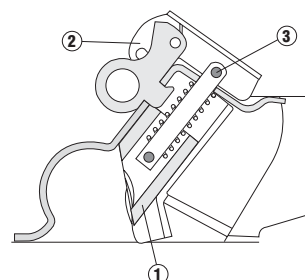
#### COUPLER REPAIR KITS 88060/88050

1. Lock and shoe assembly
2. Coupler spring
5. Handle
6. Roll pin

#### COUPLER REPAIR KITS 88061/88051

1. Lock and shoe assembly
2. Coupler spring
3. Retainer spring
4. Spring retainer
5. Handle
6. Roll pin

#### "John Deere"



#### COUPLER REPAIR KIT 07532

1. Plunger, link spring assembly
2. Cam and handle assembly
3. Rivet