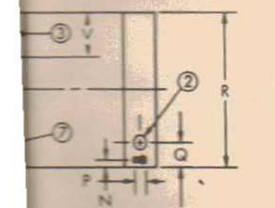
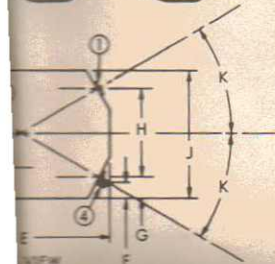
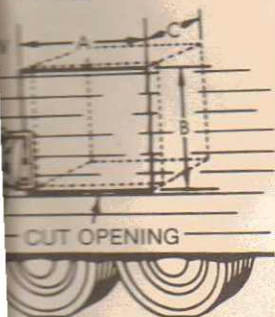




1. Follow lighting instructions for gas control.
2. Push igniter assembly forward to within 1/4" of pilot burner and hold. Twist quickly in a clockwise direction on igniter knob to produce spark. Repeat until pilot burner lights.
3. **WARNING:** AFTER LIGHTING PILOT BURNER, RELEASE IGNITER ASSEMBLY TO ALLOW COMPLETE RETRACTION UNTIL IT IS AGAINST SPARK IGNITER BRACKET AND OUT OF THE FLAME AREA. IF LEFT IN FLAME, WHEEL MAY BE DAMAGED.

INSTRUCTIONS

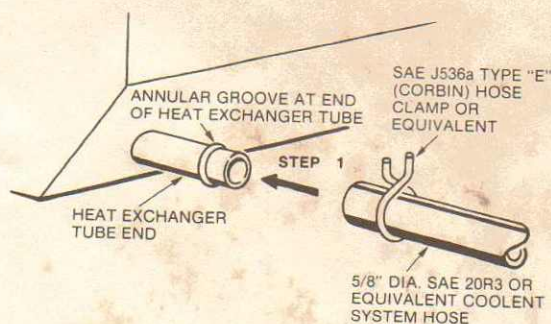
G10B



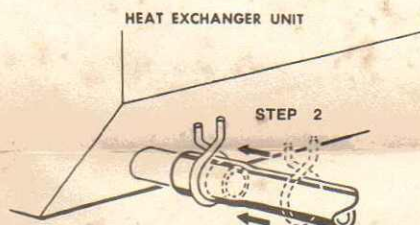
BOTTOM VIEW
standing 120° F. To use
hesive firmly to clean,
water system.

H	J	K
6-3/4	12-1/2	30°
8	15-1/2	30°
8	15-1/2	30°
T	U	V
—	—	—
4	2	3
—	—	—

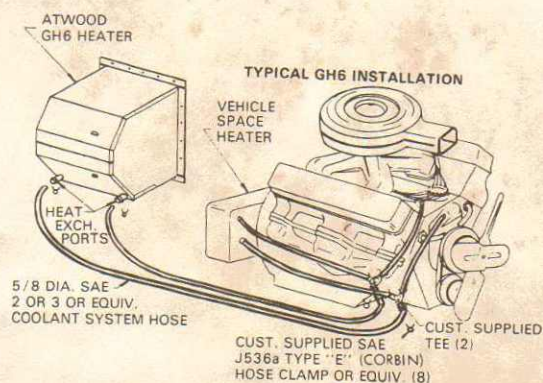
HEAT EXCHANGER HOSE INSTALLATION



STEP 1 Push hose end (with clamp attached) onto tube end as far as possible.



STEP 2 Spread hose clamp and slide toward heat exchanger unit: past annular groove and release.



Above is a "typical" GH6 installation. For best results use a 160° thermostat in the summer and a 195° thermostat in the winter.

CTIONS

