

Repairing Cast Aluminum Surface Damage

This document explains how to repair damage to cast aluminum fixtures on the exterior of an Airstream travel trailer. The example repair in these instructions explains how to repair taillight housings, door hinge, and entrance door handles.

Necessary Supplies:

- Met-All (**Part # 28428w**)
- Plastic Coat (**Part # 28174w**)
- Gloves

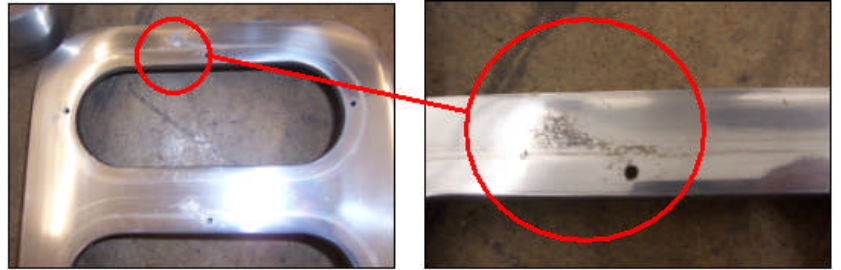


Figure 1: Example corrosion on the taillight housing

1. Protect the repair area by masking the surrounding area with one or two layers of masking tape then apply duct tape over the masking tape. Make sure the duct tape doesn't make direct contact with the exterior skin of the trailer. Refer to Figure 2 for an example.

Note: Alternatively, if you are working on a Safari or International trailer, you can remove the entire light housing component.

2. Use lacquer thinner on a rag to remove the Plasticcoat on the tail lamp housings and entrance door grab handle door, and door hinges. Remove the coating on the complete assembly. Read the product warning and comply with all prerequisites.

Note: You will need to wipe several times to completely remove the coating. Do not try to do a "spot" repair. Do not let the lacquer thinner make contact with the exterior of the unit.

- If the pitting or discoloration remains in the metal after the Plasticcoat has been stripped, try using Met-All (part # **28428w**) to polish out the discolored area (Figure 3).
- If the Met-All will not remove the discoloration of the effected area, the component will require wet sanding followed by a polishing with Met-All (part # **28428w**). Use sandpaper grade of 1500 or 2000.

Note: Make sure the component you are working on has a consistent surface finishing when you are complete.

3. Wear protective gloves and wipe the surface of the exterior cast aluminum component once it has been polished. Refer to Figure 4. Wipe it several times with lacquer thinner to remove the oils from the Met-All polish. Continue to wipe the component until the black residue can no longer be seen on the lacquer rag.

4. Let the component sit for a few seconds to allow the lacquer thinner to evaporate. The vehicle is now ready for Plasticote.

5. Apply the Plasticote application (part # **28174w**) on repair area.

- The Plasticote repair product is applied from a spray can so make sure to mask the area around the component with paper to prevent overspray from getting on the vehicle surface.
- Follow the directions on the spray can for proper application of Plasticote.

6. Carefully remove masking tape using a razorblade or box knife. Reinstall components if you removed any from step 1.

7. Use Acryl-R (part # **28430w**) to seal around the repaired components. Sometimes the lacquer thinner will discolor the silver sealer and turn it a brown or yellow color. Reseal as required.



Figure 2: mask the door hinge



Figure 3: polish with Met-All.



Figure 4: shine handle