

Intermittent Wiper Conversion Kit that fits Utilimaster help "Cut the Chatter"

49-080 - INTERMITTENT WIPER CONVERSION KIT

Includes a control box, switch and harness to provide your driver with the control of intermittent wipers. No cutting or splicing necessary!

That fit: Utilimasters with 2-motor Sprague system.



Switch



Harness



For Sprague - 2-Motor Systems, Convert your Step-Van equipped with a Sprague, two motor system, from ordinary to extraordinary.

Delay Wiper Control Box that fits Utilimaster

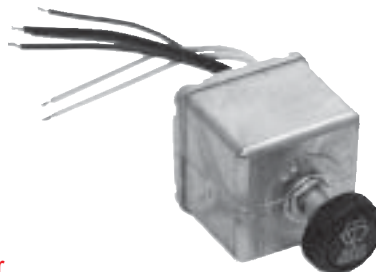
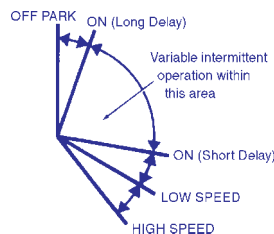


49-077 - Wiper control Box. Original equipment with all wires color coded same as original. Part Number on original unit is 66D-00077.



49-633 - If your delay column switch is bad, you can purchase this delay wiper switch for the dash that will plug into your original wiper control box or our replacement wiper control box number 49-077.

Install Intermittent Wipers in your step van OE that fits Utilimaster Heavy Duty Switch with variable intermittent wipe using advanced electronics.



45-600

- Controls One Motor
- For use with permanent magnet motors with dynamic or coast-to-park wiper systems
- Seven color coded wire leads, 5" long

Wiper Accessories



49-510
22" Pantograph
Black Wiper
Arm, 1/2"
Saddle
M-2336 blade
required with this arm



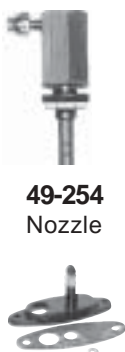
49-554
22" Black
Wiper
Blade
1/2"
Saddle



49-511
22"
Pantograph
Arm
3/16"
Saddle
Silver



HF-20 - 20"
HF-22 - 22"
Flat Wiper
Blades
3/16" saddle
Silver in color



49-254
Nozzle

M-2361
Pantograph
Adaptor Kit



49-310
10 Blade
Switch

Replacement Washer Pumps and Reservoirs



49-910 - Reservoir with
pump and cap

- 1 gallon capacity
- mounts flush to flat surface
- No grounding grommet
- Overall Dimensions
11 1/4" High x 8 5/8" Wide



Mounts on
2" x 3" metal
bracket.

49-912 - Reservoir with
pump and cap

49-914 - Pump motor only

- 70 oz. capacity
- mounts by sliding into a metal bracket located on the back
- Overall Dimensions:
8 1/4" High x 5 3/4" Wide

Original Equipment Wiper Parts that fit Older UTILIMASTERS

(Generally prior to 1995)



Sprague Pivot Shafts

(use with 49-717 Hardware Kit)

49-130 - 3/8" short pin (use with 49-221) Hardware Kit

49-131 - 5/8" long pin (use with 49-223) Knurl, Nut, Washer

49-717



AV-8829-P

3/8" "E" Type Retaining Ring

Wiper Links

49-221 - w/brass bushing

Levers

49-223 - w/ brass & plastic bushing

49-455 - w/short pin

49-460 - w/ long pin

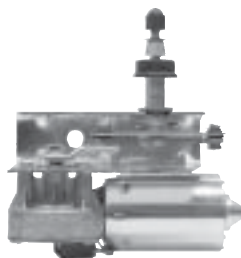
For complete motor and bracket assembly replacements Mill Supply has designed the kits below.

Mill Supply's Pre-1995 Replacement Motor and Bracket (not OEM)

Replacement Parts Available

These are the parts included with this system and are available separately.

- Wiper Motor
- Lever
- Pivot Shaft
- Link
- Bracket
- Spring Clip



M-1625 - Motor and Bracket Assembly (*Curbside*)

M-1626 - Motor and Bracket Assembly (*Roadside*)

This is not OEM but will replace a Sprague Systems

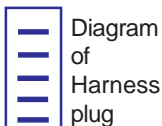


Diagram of Harness plug

Mill Supply's 1995 - '96 Replacement Motor and Bracket (not OEM)

These are the parts included with this system and are available separately.

- Wiper Motor
- Pivot Shaft
- Lever
- Link
- Bracket
- Wire Harness
- Spring Clips (2)



49-007 - Motor and Bracket Assembly (*Roadside*)

49-008 - Motor and Bracket Assembly (*Curbside*)

This is not OEM but will replace a Sprague Systems



Diagram of Harness plug

Replacement Parts Available

Bosch Components that has wiper linkage with "C" Channel (not tubular)

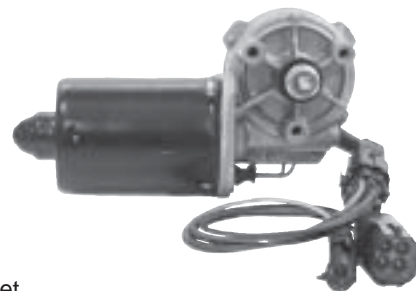


49-013

OEM 24" Bosch Wiper Blades

49-015

24" Aftermarket Blade



40-158 - Wiper

Motor for Bosch system, includes OEM wire harness plug.



49-011 - Wiper switch with harness (includes knob) for 1997 thru present assemblies with Bosch Systems

See Page 92 for other wiper switches

Wiper Linkage

Besides saving you money, once you purchase our replacement drive link set-up you can order just the pieces you need. The pieces on the original Bosch system cannot be purchased separately.



OEM Linkage from Bosch

Mill Supply's Replacement Linkage (49-210)

49-210

Wiper linkage that fits new style Utilimaster with the Bosch type wiper system (system without tubular drive links)

WIPER PARTS that fit SUPREME

NOT MADE OR SPONSORED BY SUPREME

WWC-2020 WIPER KIT



Includes:

Motor
Pivot Shaft
Lever
Link
Bracket



49-000
Motor



49-430
Lever (for old style motor with double "D" mounting hole)



49-410
Lever for New Motor WM-912 (has round mounting hole)



HF-20 - 20"
HF-22 - 22"
Flat Wiper Blades
3/16" saddle
Silver in color



49-508
Wiper Arm
Silver in color
3/16" Saddle



49-554
22" Black Wiper Blade
1/2" Saddle



49-510
22" Black Pantograph Wiper Arm
1/2" Saddle



49-108
Pivot Shaft



49-217
Link



M-2361
Pantograph Adaptor Kit



49-305
Wiper Switch

WIPER PARTS that fit BOYERTOWN

NOT MADE OR SPONSORED BY BOYERTOWN



49-000
Wiper Motor
(Replaces all original equipment. Use with 49-420 Drive Lever)



49-420
Drive Lever for 49-000 and newer style motors



49-425
Drive Lever (for old style motor 1968-71 WC-19012) Old motor no longer available.



49-213 Link
(2 needed)
1968-71



HF-18
18" Wiper Blade
(2 needed),
1965-71



49-108
Pivot Shaft
(2 needed),
1968-71



49-711
Spring Clip
(3 needed),
1965-71



49-904 - Reservoir with pump and cap
49-905 - Cap only for M-1437
• 1 gallon capacity
• mounts flush to flat surface
• with grounding grommet
• mounting hole centers at 7 3/4" Wide x 6 1/2" High



49-304
4 Blade Terminal Switch. Has push washer feature.
1965-71



49-305
5 Blade Terminal Switch. Has push washer feature.
1965-71

WIPER PARTS that fit UNION CITY BODY

95

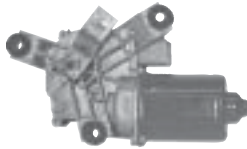
NOT MADE OR SPONSORED BY UNION CITY BODY

1963 - 1990 Motor
with 3 terminals



40-154K - Wiper Motor has
the rectangular housing

1992 - on Motor



40-156 - Wiper Motor for
1992 and newer.

*Motors are not new but
remanufactured and have a
one year warranty.*



40-151 -
Windshield
Washer Pump
for 40-154K



49-312 - GM Lighted
Wiper Switch, Push for
Wash OE#1994234



49-524
Adjusts
13" - 18 1/2"
3/16" Saddle
(49-524 pivot shaft hole
does not go through)
1991 & Older



Rigid Blade
3/16" Saddle
HF-16 - 16"
HF-18 - 18"
HF-20 - 20"
HF-22 - 22"



**Silver
Flex
Blade**

3/16" Saddle
M-1616 - 16" -
M-1618 - 18" -
M-1620 - 20" -



**Refills
for Silver
Flex
Blade**
M-5316
M-5318
M-5320

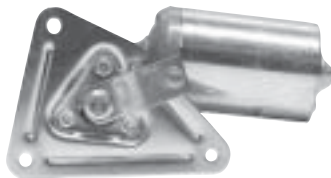


**Flex
Winter
Blade**

3/16" Saddle
M-1716 - 16"
M-1718 - 18"

WIPER MOTORS that fit INTERNATIONAL

NOT MADE OR SPONSORED BY INTERNATIONAL



40-166 - Wiper motor
with bracket. No plug
OEM #471496C93



40-167 - Wiper motor
with bracket and plug
OEM #1661843C92

INDUSTRIAL APPLICATION WIPER MOTORS

Used on:

- Cranes
- Tractors
- Tow Motors
- Track Hoes
- Airport Tugs
- Front End Loaders
- Marine Applications

*The wiper motors we stock are rated at 12 volts and are single speed. Other options are available
special order: 12 or 24 volt, 1 or 2 speed, auto park, with or without switch on motor.*



49-031
Industrial Application Universal
Wiper Motor with **1" Shaft**,
12 Volt, Single Speed



49-032
Industrial Application Universal
Wiper Motor with **2" Shaft**,
12 Volt, Single Speed



49-033
Industrial Application Universal
Wiper Motor with **3" Shaft**,
12 Volt, Single Speed



49-524
Wiper Arm
Adjusts
13" - 18 1/2",

For Wiper Blades see
blades listed above -
under the heading
"Wiper Parts that fit
Union City Body".